

Anti-CDH16 antibody (750-830 C-Term) (STJ91959)

STJ91959

GENERAL INFORMATION

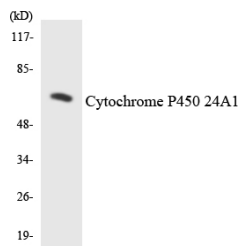
Product Type	Primary antibodies
Short Description	Rabbit polyclonal antibody anti-Cadherin-16 (750-830 C-Term) is suitable for use in Western Blot, Immunohistochemistry, Immunofluorescence, Immunocytochemistry and ELISA research applications.
Applications	WB, IHC-P, IF, ICC, ELISA
Host/Source	Rabbit
Reactivity	Human, Rat, Mouse

PRODUCT PROPERTIES

Clonality	Polyclonal
Clone ID	
Concentration	1 mg/mL
Conjugation	Unconjugated
Purification	The antibody was affinity-purified from rabbit anti-serum by affinity-chromatography.
Dilution Range	WB 1:500-1:2000 IHC 1:100-1:300 IF 1:200-1:1000 ELISA 1:10000
Formulation	PBS, 50% Glycerol, 0.5% BSA and 0.02% Sodium Azide.
Isotype	IgG
Storage Instruction	Store at -20°C for up to 1 year from the date of receipt, and avoid repeat freeze-thaw cycles.

TARGET INFORMATION

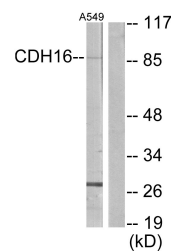
Gene ID	1014
Gene Symbol	CDH16
Uniprot ID	CAD16_HUMAN
Immunogen	The antiserum was produced against synthesized peptide derived from human CDH16 at amino acid range 780-829
Immunogen Region	750-830 C-Term
Specificity	CDH16 polyclonal antibody (Cadherin-16) binds to endogenous Cadherin-16 at the amino acid region 750-830 C-Term.
Immunogen Sequence	



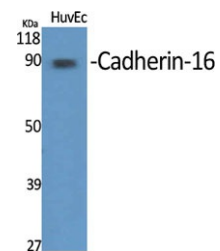
Western blot analysis of the lysates from HepG2 cells using Cytochrome P450 24A1 antibody.



Western blot analysis of A549 cells using Cadherin-16 Polyclonal Antibody diluted at 1: 1000



Western blot analysis of lysates from A549 cells, using CDH16 Antibody. The lane on the right is blocked with the synthesized peptide.



Western blot analysis of various cells using Cadherin-16 Polyclonal Antibody diluted at 1: 1000

This product is suitable for in-vitro studies under the RESEARCH USE ONLY [RUO] licence. This product must not be used as for diagnostic or other medical purposes.
St John's Laboratory Ltd, Knowledge Dock Business Centre, University Way, London, E16 2RD | Tel: 0208 223 3081