

Anti-CAD antibody (400-480) (STJ91958)

STJ91958

GENERAL INFORMATION

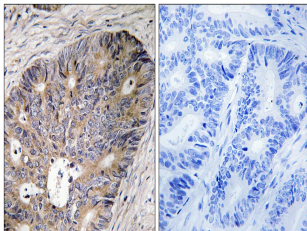
Product Type	Primary antibodies
Short Description	Rabbit polyclonal antibody anti-Cad Protein Includes-Glutamine-Dependent Carbamoyl-Phosphate Synthase-Aspartate Carbamoyltransferase-Dihydroorotase (400-480) is suitable for use in Immunohistochemistry, Immunofluorescence and ELISA research applicati
Applications	IHC-P, IF-P, ELISA
Host/Source	Rabbit
Reactivity	Human, Mouse

PRODUCT PROPERTIES

Clonality	Polyclonal
Clone ID	
Concentration	1 mg/mL
Conjugation	Unconjugated
Purification	The antibody was affinity-purified from rabbit anti-serum by affinity-chromatography.
Dilution	IHC 1:100-1:300
Range	ELISA 1:20000
Formulation	PBS, 50% Glycerol, 0.5% BSA and 0.02% Sodium Azide.
Isotype	IgG
Storage Instruction	Store at -20°C for up to 1 year from the date of receipt, and avoid repeat freeze-thaw cycles.

TARGET INFORMATION

Gene ID	790
Gene Symbol	CAD
Uniprot ID	PYR1_HUMAN
Immunogen	The antiserum was produced against synthesized peptide derived from human CAD at amino acid range 422-471
Immunogen Region	400-480
Specificity	CAD polyclonal antibody (Cad Protein Includes-Glutamine-Dependent Carbamoyl-Phosphate Synthase-Aspartate Carbamoyltransferase-Dihydroorotase) binds to endogenous Cad Protein Includes-Glutamine-Dependent Carbamoyl-Phosphate Synthase-Aspartate Carbamoy
Immunogen Sequence	



Immunohistochemistry analysis of paraffin-embedded human colon carcinoma tissue, using CAD Antibody. The picture on the right is blocked with the synthesized peptide.

This product is suitable for in-vitro studies under the RESEARCH USE ONLY [RUO] licence. This product must not be used as for diagnostic or other medical purposes.
St John's Laboratory Ltd, Knowledge Dock Business Centre, University Way, London, E16 2RD | Tel: 0208 223 3081