

Anti-CACNA2D4 antibody (520-600 Internal) (STJ91957)

STJ91957

GENERAL INFORMATION

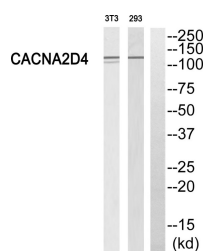
Product Type	Primary antibodies
Short Description	Rabbit polyclonal antibody anti-Voltage-Dependent Calcium Channel Subunit Alpha-2/Delta-4 (520-600 Internal) is suitable for use in Western Blot and ELISA research applications.
Applications	WB, ELISA
Host/Source	Rabbit
Reactivity	Human, Mouse, Rat

PRODUCT PROPERTIES

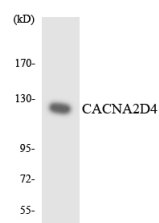
Clonality	Polyclonal
Clone ID	
Concentration	1 mg/mL
Conjugation	Unconjugated
Purification	The antibody was affinity-purified from rabbit anti-serum by affinity-chromatography.
Dilution	WB 1:500-1:2000
Range	ELISA 1:20000
Formulation	PBS, 50% Glycerol, 0.5% BSA and 0.02% Sodium Azide.
Isotype	IgG
Storage Instruction	Store at -20°C for up to 1 year from the date of receipt, and avoid repeat freeze-thaw cycles.

TARGET INFORMATION

Gene ID	93589
Gene Symbol	CACNA2D4
Uniprot ID	CA2D4_HUMAN
Immunogen	The antiserum was produced against synthesized peptide derived from human CACNA2D4 at amino acid range 548-597
Immunogen Region	520-600 Internal
Specificity	CACNA2D4 polyclonal antibody (Voltage-Dependent Calcium Channel Subunit Alpha-2/Delta-4) binds to endogenous Voltage-Dependent Calcium Channel Subunit Alpha-2/Delta-4 at the amino acid region 520-600 Internal.
Immunogen Sequence	



Western blot analysis of CACNA2D4 Antibody. The lane on the right is blocked with the CACNA2D4 peptide.



Western blot analysis of the lysates from COLO205 cells using CACNA2D4 antibody.



Western blot analysis of various cells using Cacna2d4 Polyclonal Antibody

This product is suitable for in-vitro studies under the RESEARCH USE ONLY [RUO] licence. This product must not be used as for diagnostic or other medical purposes.
 St John's Laboratory Ltd, Knowledge Dock Business Centre, University Way, London, E16 2RD | Tel: 0208 223 3081