

Anti-CACNA2D1 antibody (N-Term) (STJ91956)

STJ91956

GENERAL INFORMATION

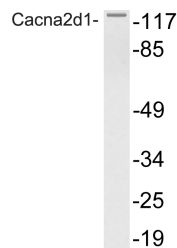
Product Type	Primary antibodies
Short Description	Rabbit polyclonal antibody anti-Voltage-Dependent Calcium Channel Subunit Alpha-2/Delta-1 (N-Term) is suitable for use in Western Blot and ELISA research applications.
Applications	WB, ELISA
Host/Source	Rabbit
Reactivity	Human, Mouse, Rat

PRODUCT PROPERTIES

Clonality	Polyclonal
Clone ID	
Concentration	1 mg/mL
Conjugation	Unconjugated
Purification	The antibody was affinity-purified from rabbit anti-serum by affinity-chromatography.
Dilution	WB 1:500-1:2000
Range	ELISA 1:10000
Formulation	PBS, 50% Glycerol, 0.5% BSA and 0.02% Sodium Azide.
Isotype	IgG
Storage	Store at -20°C for up to 1 year from the date of receipt, and avoid repeat freeze-thaw cycles.
Instruction	

TARGET INFORMATION

Gene ID	781
Gene Symbol	CACNA2D1
Uniprot ID	CA2D1_HUMAN
Immunogen	The antiserum was produced against synthesized peptide derived from human Cacna2d1 at amino acid range 90-139
Immunogen Region	N-Term
Specificity	CACNA2D1 polyclonal antibody (Voltage-Dependent Calcium Channel Subunit Alpha-2/Delta-1) binds to endogenous Voltage-Dependent Calcium Channel Subunit Alpha-2/Delta-1 at the amino acid region N-Term.
Immunogen Sequence	



Western blot analysis of lysate from NIH/3T3 cells, using Cacna2d1 antibody.

This product is suitable for in-vitro studies under the RESEARCH USE ONLY [RUO] licence. This product must not be used as for diagnostic or other medical purposes.
 St John's Laboratory Ltd, Knowledge Dock Business Centre, University Way, London, E16 2RD | Tel: 0208 223 3081