

Anti-CABLES2 antibody (60-140 Internal) (STJ91954)

STJ91954

GENERAL INFORMATION

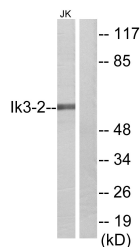
Product Type	Primary antibodies
Short Description	Rabbit polyclonal antibody anti-Cdk5 And Abl1 Enzyme Substrate 2 (60-140 Internal) is suitable for use in Western Blot, Immunohistochemistry, Immunofluorescence, Immunocytochemistry and ELISA research applications.
Applications	WB, IHC-P, IF, ICC, ELISA
Host/Source	Rabbit
Reactivity	Human, Mouse

PRODUCT PROPERTIES

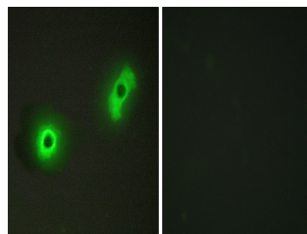
Clonality	Polyclonal
Clone ID	
Concentration	1 mg/mL
Conjugation	Unconjugated
Purification	The antibody was affinity-purified from rabbit anti-serum by affinity-chromatography.
Dilution Range	WB 1:500-1:2000 IHC 1:100-1:300 IF 1:200-1:1000 ELISA 1:10000
Formulation	PBS, 50% Glycerol, 0.5% BSA and 0.02% Sodium Azide.
Isotype	IgG
Storage Instruction	Store at -20°C for up to 1 year from the date of receipt, and avoid repeat freeze-thaw cycles.

TARGET INFORMATION

Gene ID	81928
Gene Symbol	CABLES2
Uniprot ID	CABL2_HUMAN
Immunogen	The antiserum was produced against synthesized peptide derived from human Ik3-2 at amino acid range 91-140
Immunogen Region	60-140 Internal
Specificity	CABLES2 polyclonal antibody (Cdk5 And Abl1 Enzyme Substrate 2) binds to endogenous Cdk5 And Abl1 Enzyme Substrate 2 at the amino acid region 60-140 Internal.
Immunogen Sequence	



Western blot analysis of lysates from Jurkat cells, using Ik3-2 Antibody. The lane on the right is blocked with the synthesized peptide.



Immunofluorescence analysis of A549 cells, using Ik3-2 Antibody. The picture on the right is blocked with the synthesized peptide.

This product is suitable for in-vitro studies under the RESEARCH USE ONLY [RUO] licence. This product must not be used as for diagnostic or other medical purposes.
St John's Laboratory Ltd, Knowledge Dock Business Centre, University Way, London, E16 2RD | Tel: 0208 223 3081