

Anti-COQ8A antibody (270-350 Internal) (STJ91948)

STJ91948

GENERAL INFORMATION

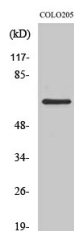
Product Type	Primary antibodies
Short Description	Rabbit polyclonal antibody anti-Atypical Kinase Coq8a-Mitochondrial (270-350 Internal) is suitable for use in Western Blot, Immunohistochemistry, Immunofluorescence, Immunocytochemistry and ELISA research applications.
Applications	WB, IHC-P, IF, ICC, ELISA
Host/Source	Rabbit
Reactivity	Human, Mouse, Rat

PRODUCT PROPERTIES

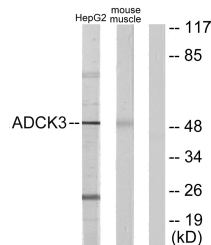
Clonality	Polyclonal
Clone ID	
Concentration	1 mg/mL
Conjugation	Unconjugated
Purification	The antibody was affinity-purified from rabbit anti-serum by affinity-chromatography.
Dilution Range	WB 1:500-1:2000 IHC 1:100-1:300 IF 1:200-1:1000 ELISA 1:10000
Formulation	PBS, 50% Glycerol, 0.5% BSA and 0.02% Sodium Azide.
Isotype	IgG
Storage Instruction	Store at -20°C for up to 1 year from the date of receipt, and avoid repeat freeze-thaw cycles.

TARGET INFORMATION

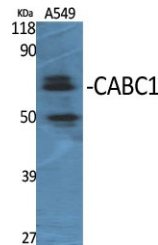
Gene ID	56997
Gene Symbol	COQ8A
Uniprot ID	COQ8A_HUMAN
Immunogen	The antiserum was produced against synthesized peptide derived from human ADCK3 at amino acid range 301-350
Immunogen Region	270-350 Internal
Specificity	COQ8A polyclonal antibody (Atypical Kinase Coq8a-Mitochondrial) binds to endogenous Atypical Kinase Coq8a-Mitochondrial at the amino acid region 270-350 Internal.
Immunogen Sequence	



Western blot analysis of COLO205 cells using CABC1 Polyclonal Antibody



Western blot analysis of lysates from HepG2 and mouse muscle cells, using ADCK3 Antibody. The lane on the right is blocked with the synthesized peptide.



Western blot analysis of various cells using CABC1 Polyclonal Antibody

This product is suitable for in-vitro studies under the RESEARCH USE ONLY [RUO] licence. This product must not be used as for diagnostic or other medical purposes.
St John's Laboratory Ltd, Knowledge Dock Business Centre, University Way, London, E16 2RD | Tel: 0208 223 3081