

Anti-CA14 antibody (130-210 Internal) (STJ91947)

STJ91947

GENERAL INFORMATION

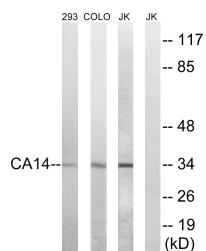
Product Type	Primary antibodies
Short Description	Rabbit polyclonal antibody anti-Carbonic Anhydrase 14 (130-210 Internal) is suitable for use in Western Blot and ELISA research applications.
Applications	WB, ELISA
Host/Source	Rabbit
Reactivity	Human, Mouse, Rat

PRODUCT PROPERTIES

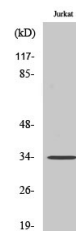
Clonality	Polyclonal
Clone ID	
Concentration	1 mg/mL
Conjugation	Unconjugated
Purification	The antibody was affinity-purified from rabbit anti-serum by affinity-chromatography.
Dilution Range	WB 1:500-1:2000 ELISA 1:20000
Formulation	PBS, 50% Glycerol, 0.5% BSA and 0.02% Sodium Azide.
Isotype	IgG
Storage Instruction	Store at -20°C for up to 1 year from the date of receipt, and avoid repeat freeze-thaw cycles.

TARGET INFORMATION

Gene ID	23632
Gene Symbol	CA14
Uniprot ID	CAH14_HUMAN
Immunogen	The antiserum was produced against synthesized peptide derived from human CA14 at amino acid range 161-210
Immunogen Region	130-210 Internal
Specificity	CA14 polyclonal antibody (Carbonic Anhydrase 14) binds to endogenous Carbonic Anhydrase 14 at the amino acid region 130-210 Internal.
Immunogen Sequence	



Western blot analysis of lysates from Jurkat, COLO, and 293 cells, using CA14 Antibody. The lane on the right is blocked with the synthesized peptide.



Western blot analysis of various cells using CA XIV Polyclonal Antibody

This product is suitable for in-vitro studies under the RESEARCH USE ONLY [RUO] licence. This product must not be used as for diagnostic or other medical purposes.
 St John's Laboratory Ltd, Knowledge Dock Business Centre, University Way, London, E16 2RD | Tel: 0208 223 3081