

## Anti-CA13 antibody (110-190 Internal) (STJ91946)

STJ91946

### GENERAL INFORMATION

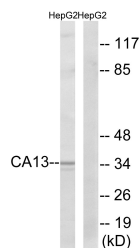
<b>Product Type</b>	Primary antibodies
<b>Short Description</b>	Rabbit polyclonal affinity-purified anti-Carbonic Anhydrase 13 (110-190 Internal) is suitable for use in Western Blot and ELISA research applications.
<b>Applications</b>	WB, ELISA
<b>Host/Source</b>	Rabbit
<b>Reactivity</b>	Human, Mouse

### PRODUCT PROPERTIES

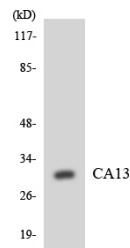
<b>Clonality</b>	Polyclonal
<b>Clone ID</b>	
<b>Concentration</b>	1 mg/mL
<b>Conjugation</b>	Unconjugated
<b>Purification</b>	The antibody was affinity-purified from rabbit anti-serum by affinity-chromatography.
<b>Dilution Range</b>	WB 1:500-1:2000 ELISA 1:10000
<b>Formulation</b>	PBS, 50% Glycerol, 0.5% BSA and 0.02% Sodium Azide.
<b>Isotype</b>	IgG
<b>Storage Instruction</b>	Store at -20°C for up to 1 year from the date of receipt, and avoid repeat freeze-thaw cycles.

### TARGET INFORMATION

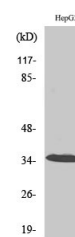
<b>Gene ID</b>	377677
<b>Gene Symbol</b>	CA13
<b>Uniprot ID</b>	CAH13_HUMAN
<b>Immunogen</b>	The antiserum was produced against synthesized peptide derived from human CA13 at amino acid range 141-190
<b>Immunogen Region</b>	110-190 Internal
<b>Specificity</b>	CA13 polyclonal antibody (Carbonic Anhydrase 13) binds to endogenous Carbonic Anhydrase 13 at the amino acid region 110-190 Internal.
<b>Immunogen Sequence</b>	



Western blot analysis of lysates from HepG2 cells, using CA13 Antibody. The lane on the right is blocked with the synthesized peptide.



Western blot analysis of the lysates from K562 cells using CA13 antibody.



Western blot analysis of various cells using CA XIII Polyclonal Antibody

This product is suitable for in-vitro studies under the RESEARCH USE ONLY [RUO] licence. This product must not be used as for diagnostic or other medical purposes.  
St John's Laboratory Ltd, Knowledge Dock Business Centre, University Way, London, E16 2RD | Tel: 0208 223 3081