

Anti-CA2 antibody (C-Term) (STJ91938)

STJ91938

GENERAL INFORMATION

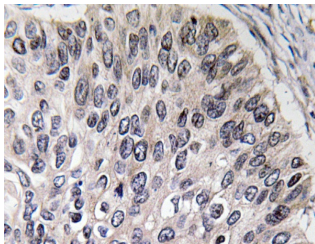
Product Type	Primary antibodies
Short Description	Rabbit polyclonal antibody anti-Carbonic Anhydrase 2 (C-Term) is suitable for use in Western Blot, Immunohistochemistry, Immunofluorescence and ELISA research applications.
Applications	WB, IHC-P, IF-P, ELISA
Host/Source	Rabbit
Reactivity	Human, Rat

PRODUCT PROPERTIES

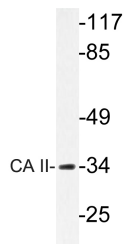
Clonality	Polyclonal
Clone ID	
Concentration	1 mg/mL
Conjugation	Unconjugated
Purification	The antibody was affinity-purified from rabbit anti-serum by affinity-chromatography.
Dilution Range	WB 1:500-1:2000 IHC 1:100-1:300 ELISA 1:40000
Formulation	PBS, 50% Glycerol, 0.5% BSA and 0.02% Sodium Azide.
Isotype	IgG
Storage Instruction	Store at -20°C for up to 1 year from the date of receipt, and avoid repeat freeze-thaw cycles.

TARGET INFORMATION

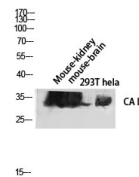
Gene ID	760
Gene Symbol	CA2
Uniprot ID	CAH2_HUMAN
Immunogen Region	The antiserum was produced against synthesized peptide derived from human CA II at amino acid range 180-229
Immunogen Region	C-Term
Specificity	CA2 polyclonal antibody (Carbonic Anhydrase 2) binds to endogenous Carbonic Anhydrase 2 at the amino acid region C-Term.
Immunogen Sequence	



Immunohistochemistry analysis of CA II antibody in paraffin-embedded human lung carcinoma tissue.



Western blot analysis of lysate from rat heart cells, using CA II antibody.



Western blot analysis of Mouse-kidney mouse-brain :293T hela lysis using CA II antibody. Antibody was diluted at 1:2000