

Anti-C6 antibody (190-270 Internal) (STJ91935)

STJ91935

GENERAL INFORMATION

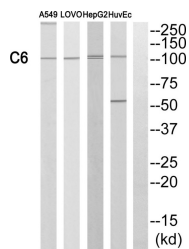
Product Type	Primary antibodies
Short Description	Rabbit polyclonal antibody anti-Complement Component C6 (190-270 Internal) is suitable for use in Western Blot, Immunohistochemistry, Immunofluorescence and ELISA research applications.
Applications	WB, IHC-P, IF-P, ELISA
Host/Source	Rabbit
Reactivity	Human, Rat

PRODUCT PROPERTIES

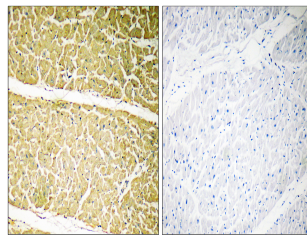
Clonality	Polyclonal
Clone ID	
Concentration	1 mg/mL
Conjugation	Unconjugated
Purification	The antibody was affinity-purified from rabbit anti-serum by affinity-chromatography.
Dilution Range	WB 1:500-1:2000 IHC 1:100-1:300 ELISA 1:40000
Formulation	PBS, 50% Glycerol, 0.5% BSA and 0.02% Sodium Azide.
Isotype	IgG
Storage Instruction	Store at -20°C for up to 1 year from the date of receipt, and avoid repeat freeze-thaw cycles.

TARGET INFORMATION

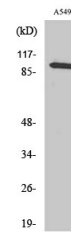
Gene ID	729
Gene Symbol	C6
Uniprot ID	CO6_HUMAN
Immunogen	The antiserum was produced against synthesized peptide derived from human C6 at amino acid range 221-270
Immunogen Region	190-270 Internal
Specificity	C6 polyclonal antibody (Complement Component C6) binds to endogenous Complement Component C6 at the amino acid region 190-270 Internal.
Immunogen Sequence	



Western blot analysis of C6 Antibody. The lane on the right is blocked with the C6 peptide.



Immunohistochemistry analysis of paraffin-embedded human heart, using C6 Antibody. The lane on the right is blocked with the C6 peptide.



Western blot analysis of various cells using C6 Polyclonal Antibody diluted at 1: 1000

This product is suitable for in-vitro studies under the RESEARCH USE ONLY [RUO] licence. This product must not be used as for diagnostic or other medical purposes.
St John's Laboratory Ltd, Knowledge Dock Business Centre, University Way, London, E16 2RD | Tel: 0208 223 3081