

Anti-RAPGEF1 antibody (440-520) (STJ91934)

STJ91934

GENERAL INFORMATION

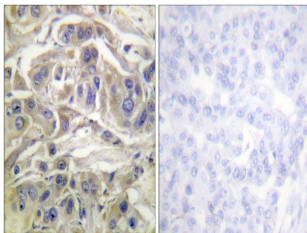
Product Type	Primary antibodies
Short Description	Rabbit polyclonal antibody anti-Rap Guanine Nucleotide Exchange Factor 1 (440-520) is suitable for use in Immunohistochemistry, Immunofluorescence and ELISA research applications.
Applications	IHC-P, IF-P, ELISA
Host/Source	Rabbit
Reactivity	Human, Rat, Mouse

PRODUCT PROPERTIES

Clonality	Polyclonal
Clone ID	
Concentration	1 mg/mL
Conjugation	Unconjugated
Purification	The antibody was affinity-purified from rabbit anti-serum by affinity-chromatography.
Dilution Range	IHC 1:100-1:300 ELISA 1:5000
Formulation	PBS, 50% Glycerol, 0.5% BSA and 0.02% Sodium Azide.
Isotype	IgG
Storage	Store at -20°C for up to 1 year from the date of receipt, and avoid repeat freeze-thaw cycles.
Instruction	

TARGET INFORMATION

Gene ID	2889
Gene Symbol	RAPGEF1
Uniprot ID	RPGF1_HUMAN
Immunogen	The antiserum was produced against synthesized peptide derived from human RAPGEF1 at amino acid range 470-519
Immunogen Region	440-520
Specificity	RAPGEF1 polyclonal antibody (Rap Guanine Nucleotide Exchange Factor 1) binds to endogenous Rap Guanine Nucleotide Exchange Factor 1 at the amino acid region 440-520.
Immunogen Sequence	



Immunohistochemistry analysis of paraffin-embedded human breast carcinoma, using RapGEF1 Antibody. The picture on the right is blocked with the synthesized peptide.