

Anti-C1S antibody (510-590 C-Term) (STJ91932)

STJ91932

GENERAL INFORMATION

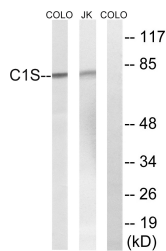
Product Type	Primary antibodies
Short Description	Rabbit polyclonal antibody anti-Complement C1s Subcomponent (510-590 C-Term) is suitable for use in Western Blot, Immunohistochemistry, Immunofluorescence and ELISA research applications.
Applications	WB, IHC-P, IF-P, ELISA
Host/Source	Rabbit
Reactivity	Human, Rat, Mouse

PRODUCT PROPERTIES

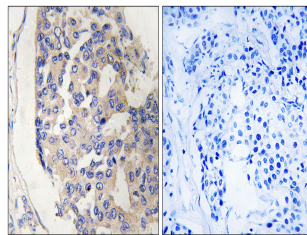
Clonality	Polyclonal
Clone ID	
Concentration	1 mg/mL
Conjugation	Unconjugated
Purification	The antibody was affinity-purified from rabbit anti-serum by affinity-chromatography.
Dilution Range	WB 1:500-1:2000 IHC 1:100-1:300 ELISA 1:40000
Formulation	PBS, 50% Glycerol, 0.5% BSA and 0.02% Sodium Azide.
Isotype	IgG
Storage Instruction	Store at 20°C for up to 1 year from the date of receipt, and avoid repeat freeze-thaw cycles.

TARGET INFORMATION

Gene ID	716
Gene Symbol	C1S
Uniprot ID	C1S_HUMAN
Immunogen Region	The antiserum was produced against synthesized peptide derived from human C1S at amino acid range 541-590
Immunogen Region	510-590 C-Term
Specificity	C1S polyclonal antibody (Complement C1s Subcomponent) binds to endogenous Complement C1s Subcomponent at the amino acid region 510-590 C-Term.
Immunogen Sequence	



Western blot analysis of lysates from Jurkat and COLO cells, using C1S Antibody. The lane on the right is blocked with the synthesized peptide.



Immunohistochemistry analysis of paraffin-embedded human breast carcinoma tissue, using C1S Antibody. The picture on the right is blocked with the synthesized peptide.