

Anti-C1QL2 antibody (200-280 C-Term) (STJ91931)

STJ91931

GENERAL INFORMATION

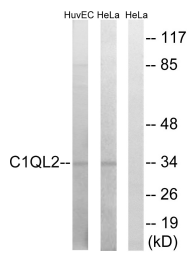
Product Type	Primary antibodies
Short Description	Rabbit polyclonal antibody anti-Complement C1q-Like Protein 2 (200-280 C-Term) is suitable for use in Western Blot, Immunohistochemistry, Immunofluorescence and ELISA research applications.
Applications	WB, IHC-P, IF-P, ELISA
Host/Source	Rabbit
Reactivity	Human, Mouse

PRODUCT PROPERTIES

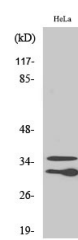
Clonality	Polyclonal
Clone ID	
Concentration	1 mg/mL
Conjugation	Unconjugated
Purification	The antibody was affinity-purified from rabbit anti-serum by affinity-chromatography.
Dilution Range	WB 1:500-1:2000 IHC 1:100-1:300 ELISA 1:10000
Formulation	PBS, 50% Glycerol, 0.5% BSA and 0.02% Sodium Azide.
Isotype	IgG
Storage Instruction	Store at -20°C for up to 1 year from the date of receipt, and avoid repeat freeze-thaw cycles.

TARGET INFORMATION

Gene ID	165257
Gene Symbol	C1QL2
Uniprot ID	C1QL2_HUMAN
Immunogen	The antiserum was produced against synthesized peptide derived from human C1QL2 at amino acid range 231-280
Immunogen Region	200-280 C-Term
Specificity	C1QL2 polyclonal antibody (Complement C1q-Like Protein 2) binds to endogenous Complement C1q-Like Protein 2 at the amino acid region 200-280 C-Term.
Immunogen Sequence	



Western blot analysis of lysates from HeLa and HUVEC cells, using C1QL2 Antibody. The lane on the right is blocked with the synthesized peptide.



Western blot analysis of various cells using C1qL2 Polyclonal Antibody