

Anti-C1QBP antibody (30-110 Internal) (STJ91929)

STJ91929

GENERAL INFORMATION

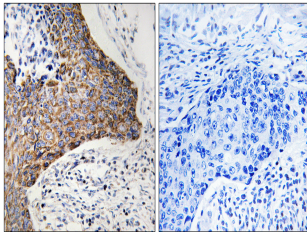
| | |
|--------------------------|--|
| Product Type | Primary antibodies |
| Short Description | Rabbit polyclonal antibody anti-Complement Component 1 Q Subcomponent-Binding Protein-Mitochondrial (30-110 Internal) is suitable for use in Western Blot, Immunohistochemistry, Immunofluorescence and ELISA research applications. |
| Applications | WB, IHC-P, IF-P, ELISA |
| Host/Source | Rabbit |
| Reactivity | Human, Mouse, Rat |

PRODUCT PROPERTIES

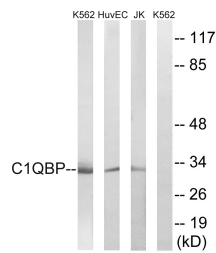
| | |
|----------------------------|--|
| Clonality | Polyclonal |
| Clone ID | |
| Concentration | 1 mg/mL |
| Conjugation | Unconjugated |
| Purification | The antibody was affinity-purified from rabbit anti-serum by affinity-chromatography. |
| Dilution Range | WB 1:500-1:2000 IHC 1:100-1:300 ELISA 1:40000 |
| Formulation | PBS, 50% Glycerol, 0.5% BSA and 0.02% Sodium Azide. |
| Isotype | IgG |
| Storage Instruction | Store at -20°C for up to 1 year from the date of receipt, and avoid repeat freeze-thaw cycles. |

TARGET INFORMATION

| | |
|---------------------------|---|
| Gene ID | 708 |
| Gene Symbol | C1QBP |
| Uniprot ID | C1QBP_HUMAN |
| Immunogen | The antiserum was produced against synthesized peptide derived from human C1QBP at amino acid range 61-110 |
| Immunogen Region | 30-110 Internal |
| Specificity | C1QBP polyclonal antibody (Complement Component 1 Q Subcomponent-Binding Protein-Mitochondrial) binds to endogenous Complement Component 1 Q Subcomponent-Binding Protein-Mitochondrial at the amino acid region 30-110 Internal. |
| Immunogen Sequence | |



Immunohistochemistry analysis of paraffin-embedded human tonsil tissue, using C1QBP Antibody. The picture on the right is blocked with the synthesized peptide.



Western blot analysis of lysates from Jurkat, HUVEC, and K562 cells, using C1QBP Antibody. The lane on the right is blocked with the synthesized peptide.



Western blot analysis of various cells using C1QBP Polyclonal Antibody diluted at 1: 1000