

Anti-C1QB antibody (130-210 C-Term) (STJ91928)

STJ91928

GENERAL INFORMATION

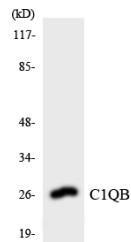
Product Type	Primary antibodies
Short Description	Rabbit polyclonal antibody anti-Complement C1q Subcomponent Subunit B (130-210 C-Term) is suitable for use in Western Blot, Immunohistochemistry, Immunofluorescence, Immunocytochemistry and ELISA research applications.
Applications	WB, IHC-P, IF, ICC, ELISA
Host/Source	Rabbit
Reactivity	Human, Rat, Mouse

PRODUCT PROPERTIES

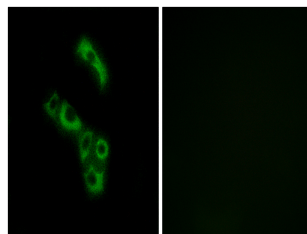
Clonality	Polyclonal
Clone ID	
Concentration	1 mg/mL
Conjugation	Unconjugated
Purification	The antibody was affinity-purified from rabbit anti-serum by affinity-chromatography.
Dilution Range	WB 1:500-1:2000 IHC 1:100-1:300 IF 1:200-1:1000 ELISA 1:40000
Formulation	PBS, 50% Glycerol, 0.5% BSA and 0.02% Sodium Azide.
Isotype	IgG
Storage Instruction	Store at -20°C for up to 1 year from the date of receipt, and avoid repeat freeze-thaw cycles.

TARGET INFORMATION

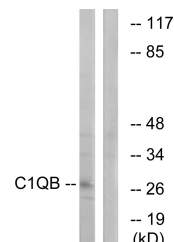
Gene ID	713
Gene Symbol	C1QB
Uniprot ID	C1QB_HUMAN
Immunogen	The antiserum was produced against synthesized peptide derived from human C1QB at amino acid range 161-210
Immunogen Region	130-210 C-Term
Specificity	C1QB polyclonal antibody (Complement C1q Subcomponent Subunit B) binds to endogenous Complement C1q Subcomponent Subunit B at the amino acid region 130-210 C-Term.
Immunogen Sequence	



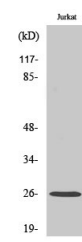
Western blot analysis of the lysates from Jurkat cells using C1QB antibody.



Immunofluorescence analysis of A549 cells, using C1QB Antibody. The picture on the right is blocked with the synthesized peptide.



Western blot analysis of lysates from Jurkat cells, using C1QB Antibody. The lane on the right is blocked with the synthesized peptide.



Western blot analysis of various cells using C1q-B Polyclonal Antibody diluted at 1: 1000

This product is suitable for in-vitro studies under the RESEARCH USE ONLY [RUO] licence. This product must not be used as for diagnostic or other medical purposes.
St John's Laboratory Ltd, Knowledge Dock Business Centre, University Way, London, E16 2RD | Tel: 0208 223 3081