

Anti-ZNHIT6 antibody (270-350 Internal) (STJ91927)

STJ91927

GENERAL INFORMATION

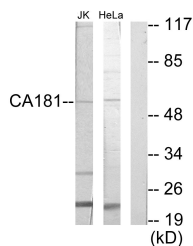
Product Type	Primary antibodies
Short Description	Rabbit polyclonal antibody anti-Box C/D Snorna Protein 1 (270-350 Internal) is suitable for use in Western Blot, Immunohistochemistry, Immunofluorescence and ELISA research applications.
Applications	WB, IHC-P, IF-P, ELISA
Host/Source	Rabbit
Reactivity	Human, Mouse

PRODUCT PROPERTIES

Clonality	Polyclonal
Clone ID	
Concentration	1 mg/mL
Conjugation	Unconjugated
Purification	The antibody was affinity-purified from rabbit anti-serum by affinity-chromatography.
Dilution Range	WB 1:500-1:2000 ELISA 1:5000
Formulation	PBS, 50% Glycerol, 0.5% BSA and 0.02% Sodium Azide.
Isotype	IgG
Storage Instruction	Store at -20°C for up to 1 year from the date of receipt, and avoid repeat freeze-thaw cycles.

TARGET INFORMATION

Gene ID	54680
Gene Symbol	ZNHIT6
Uniprot ID	BCD1_HUMAN
Immunogen	The antiserum was produced against synthesized peptide derived from human CA181 at amino acid range 301-350
Immunogen Region	270-350 Internal
Specificity	ZNHIT6 polyclonal antibody (Box C/D Snorna Protein 1) binds to endogenous Box C/D Snorna Protein 1 at the amino acid region 270-350 Internal.
Immunogen Sequence	



Western blot analysis of lysates from Jurkat and HeLa cells, using CA181 Antibody. The lane on the right is blocked with the synthesized peptide.