

Anti-SERPING1 antibody (320-400 Internal) (STJ91926)

STJ91926

GENERAL INFORMATION

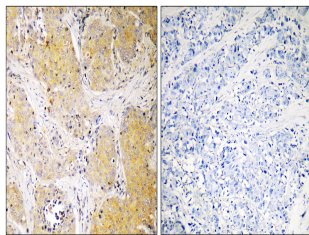
Product Type	Primary antibodies
Short Description	Rabbit polyclonal antibody anti-Plasma Protease C1 Inhibitor (320-400 Internal) is suitable for use in Western Blot, Immunohistochemistry, Immunofluorescence and ELISA research applications.
Applications	WB, IHC-P, IF-P, ELISA
Host/Source	Rabbit
Reactivity	Human, Rat, Mouse

PRODUCT PROPERTIES

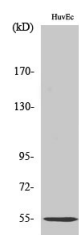
Clonality	Polyclonal
Clone ID	
Concentration	1 mg/mL
Conjugation	Unconjugated
Purification	The antibody was affinity-purified from rabbit anti-serum by affinity-chromatography.
Dilution Range	WB 1:500-1:2000 IHC 1:100-1:300 ELISA 1:40000
Formulation	PBS, 50% Glycerol, 0.5% BSA and 0.02% Sodium Azide.
Isotype	IgG
Storage Instruction	Store at -20°C for up to 1 year from the date of receipt, and avoid repeat freeze-thaw cycles.

TARGET INFORMATION

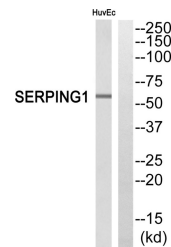
Gene ID	710
Gene Symbol	SERPING1
Uniprot ID	IC1_HUMAN
Immunogen	The antiserum was produced against synthesized peptide derived from human SERPING1 at amino acid range 342-391
Immunogen Region	320-400 Internal
Specificity	SERPING1 polyclonal antibody (Plasma Protease C1 Inhibitor) binds to endogenous Plasma Protease C1 Inhibitor at the amino acid region 320-400 Internal.
Immunogen Sequence	



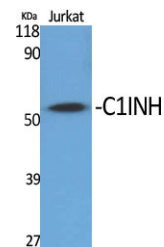
Immunohistochemistry analysis of paraffin-embedded human breast cancer, using SERPING1 Antibody. The picture on the right is blocked with the SERPING1 peptide.



Western blot analysis of HuvEc cells using C1INH Polyclonal Antibody



Western blot analysis of SERPING1 Antibody. The lane on the right is blocked with the SERPING1 peptide.



Western blot analysis of various cells using C1INH Polyclonal Antibody

This product is suitable for in-vitro studies under the RESEARCH USE ONLY [RUO] licence. This product must not be used as for diagnostic or other medical purposes.
 St John's Laboratory Ltd, Knowledge Dock Business Centre, University Way, London, E16 2RD | Tel: 0208 223 3081