

Anti-CEBPZ antibody (10-90 N-Term) (STJ91924)

STJ91924

GENERAL INFORMATION

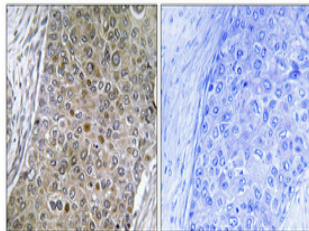
Product Type	Primary antibodies
Short Description	Rabbit polyclonal antibody anti-Ccaat/Enhancer-Binding Protein Zeta (10-90 N-Term) is suitable for use in Western Blot, Immunohistochemistry, Immunofluorescence, Immunocytochemistry and ELISA research applications.
Applications	WB, IHC-P, IF, ICC, ELISA
Host/Source	Rabbit
Reactivity	Human, Rat, Mouse

PRODUCT PROPERTIES

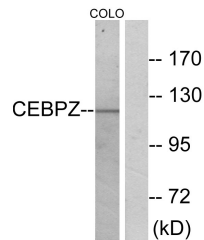
Clonality	Polyclonal
Clone ID	
Concentration	1 mg/mL
Conjugation	Unconjugated
Purification	The antibody was affinity-purified from rabbit anti-serum by affinity-chromatography.
Dilution	WB 1:500-1:2000
Range	IHC 1:100-1:300 IF 1:200-1:1000 ELISA 1:20000
Formulation	PBS, 50% Glycerol, 0.5% BSA and 0.02% Sodium Azide.
Isotype	IgG
Storage Instruction	Store at -20°C for up to 1 year from the date of receipt, and avoid repeat freeze-thaw cycles.

TARGET INFORMATION

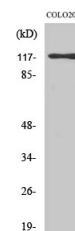
Gene ID	10153
Gene Symbol	CEBPZ
Uniprot ID	CEBPZ_HUMAN
Immunogen	The antiserum was produced against synthesized peptide derived from human CEBPZ at amino acid range 1-50
Immunogen Region	10-90 N-Term
Specificity	CEBPZ polyclonal antibody (Ccaat/Enhancer-Binding Protein Zeta) binds to endogenous Ccaat/Enhancer-Binding Protein Zeta at the amino acid region 10-90 N-Term.
Immunogen Sequence	



Immunohistochemical analysis of paraffin-embedded Human breast cancer. Antibody was diluted at 1:100 (4°C overnight). High-pressure and temperature Tris-EDTA, pH8.0 was used for antigen retrieval. Negative control (right) obtained from antibody was pre-absorbed by immunogen peptide.



Western blot analysis of lysates from COLO cells, using CEBPZ Antibody. The lane on the right is blocked with the synthesized peptide.



Western blot analysis of various cells using C/EBP Zeta Polyclonal Antibody cells nucleus extracted by Minute TM Cytoplasmic and Nuclear Fractionation kit (SC-003, Inventiotech, MN, USA).