

Anti-SLC4A11 antibody (260-340 Internal) (STJ91910)

STJ91910

GENERAL INFORMATION

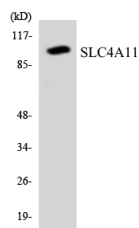
Product Type	Primary antibodies
Short Description	Rabbit polyclonal antibody anti-Solute Carrier Family 4 Member 11 (260-340 Internal) is suitable for use in Western Blot and ELISA research applications.
Applications	WB, ELISA
Host/Source	Rabbit
Reactivity	Human, Rat, Mouse

PRODUCT PROPERTIES

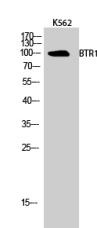
Clonality	Polyclonal
Clone ID	
Concentration	1 mg/mL
Conjugation	Unconjugated
Purification	The antibody was affinity-purified from rabbit anti-serum by affinity-chromatography.
Dilution Range	WB 1:500-1:2000 ELISA 1:20000
Formulation	PBS, 50% Glycerol, 0.5% BSA and 0.02% Sodium Azide.
Isotype	IgG
Storage Instruction	Store at -20°C for up to 1 year from the date of receipt, and avoid repeat freeze-thaw cycles.

TARGET INFORMATION

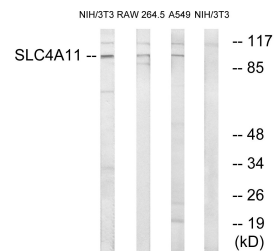
Gene ID	83959
Gene Symbol	SLC4A11
Uniprot ID	S4A11_HUMAN
Immunogen	The antiserum was produced against synthesized peptide derived from human SLC4A11 at amino acid range 291-340
Immunogen Region	260-340 Internal
Specificity	SLC4A11 polyclonal antibody (Solute Carrier Family 4 Member 11) binds to endogenous Solute Carrier Family 4 Member 11 at the amino acid region 260-340 Internal.
Immunogen Sequence	



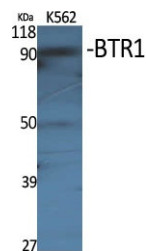
Western blot analysis of the lysates from HT-29 cells using SLC4A11 antibody.



Western blot analysis of K562 cells using BTR1 Polyclonal Antibody



Western blot analysis of lysates from NIH/3T3, RAW264.7, and A549 cells, using SLC4A11 Antibody. The lane on the right is blocked with the synthesized peptide.



Western blot analysis of various cells using BTR1 Polyclonal Antibody