

Anti-BCLAF1 antibody (250-330 Internal) (STJ91907)

STJ91907

GENERAL INFORMATION

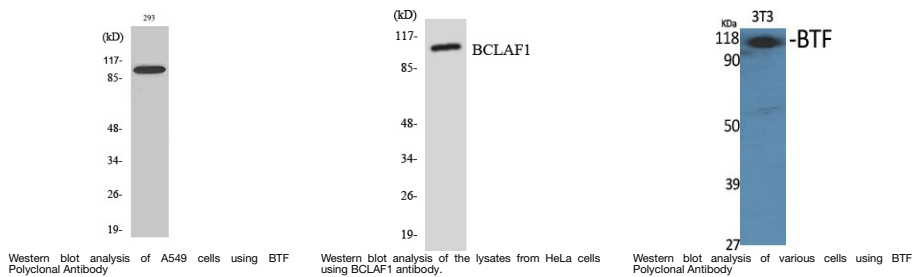
Product Type	Primary antibodies
Short Description	Rabbit polyclonal antibody anti-Bcl-2-Associated Transcription Factor 1 (250-330 Internal) is suitable for use in Western Blot and ELISA research applications.
Applications	WB, ELISA
Host/Source	Rabbit
Reactivity	Human, Mouse, Rat

PRODUCT PROPERTIES

Clonality	Polyclonal
Clone ID	
Concentration	1 mg/mL
Conjugation	Unconjugated
Purification	The antibody was affinity-purified from rabbit anti-serum by affinity-chromatography.
Dilution Range	WB 1:500-1:2000 ELISA 1:10000
Formulation	PBS, 50% Glycerol, 0.5% BSA and 0.02% Sodium Azide.
Isotype	IgG
Storage	Store at -20°C for up to 1 year from the date of receipt, and avoid repeat freeze-thaw cycles.
Instruction	

TARGET INFORMATION

Gene ID	9774
Gene Symbol	BCLAF1
Uniprot ID	BCLF1_HUMAN
Immunogen	The antiserum was produced against synthesized peptide derived from human BCLAF1 at amino acid range 281-330
Immunogen Region	250-330 Internal
Specificity	BCLAF1 polyclonal antibody (Bcl-2-Associated Transcription Factor 1) binds to endogenous Bcl-2-Associated Transcription Factor 1 at the amino acid region 250-330 Internal.
Immunogen Sequence	



This product is suitable for in-vitro studies under the RESEARCH USE ONLY [RUO] licence. This product must not be used as for diagnostic or other medical purposes.
 St John's Laboratory Ltd, Knowledge Dock Business Centre, University Way, London, E16 2RD | Tel: 0208 223 3081