

Anti-BSX antibody (150-230 C-Term) (STJ91905)

STJ91905

GENERAL INFORMATION

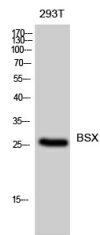
Product Type	Primary antibodies
Short Description	Rabbit polyclonal antibody anti-Brain-Specific Homeobox Protein Homolog (150-230 C-Term) is suitable for use in Western Blot and ELISA research applications.
Applications	WB, ELISA
Host/Source	Rabbit
Reactivity	Human, Mouse, Rat

PRODUCT PROPERTIES

Clonality	Polyclonal
Clone ID	
Concentration	1 mg/mL
Conjugation	Unconjugated
Purification	The antibody was affinity-purified from rabbit anti-serum by affinity-chromatography.
Dilution Range	WB 1:500-1:2000 ELISA 1:5000
Formulation	PBS, 50% Glycerol, 0.5% BSA and 0.02% Sodium Azide.
Isotype	IgG
Storage	Store at -20°C for up to 1 year from the date of receipt, and avoid repeat freeze-thaw cycles.
Instruction	

TARGET INFORMATION

Gene ID	390259
Gene Symbol	BSX
Uniprot ID	BSH_HUMAN
Immunogen	Synthesized peptide derived from BSX. at amino acid range: 150-230
Immunogen Region	150-230 C-Term
Specificity	BSX polyclonal antibody (Brain-Specific Homeobox Protein Homolog) binds to endogenous Brain-Specific Homeobox Protein Homolog at the amino acid region 150-230 C-Term.
Immunogen Sequence	



Western blot analysis of 293T cells using BSX
Polyclonal Antibody diluted at 1: 500

This product is suitable for in-vitro studies under the RESEARCH USE ONLY [RUO] licence. This product must not be used as for diagnostic or other medical purposes.
St John's Laboratory Ltd, Knowledge Dock Business Centre, University Way, London, E16 2RD | Tel: 0208 223 3081