

Anti-BST1 antibody (40-120 Internal) (STJ91903)

STJ91903

GENERAL INFORMATION

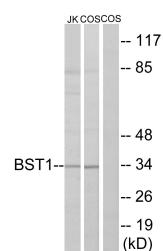
Product Type	Primary antibodies
Short Description	Rabbit polyclonal antibody anti-Adp-Ribosyl Cyclase/Cyclic Adp-Ribose Hydrolase 2 (40-120 Internal) is suitable for use in Western Blot and ELISA research applications.
Applications	WB, ELISA
Host/Source	Rabbit
Reactivity	Human, Mouse, Rat, Monkey

PRODUCT PROPERTIES

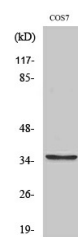
Clonality	Polyclonal
Clone ID	
Concentration	1 mg/mL
Conjugation	Unconjugated
Purification	The antibody was affinity-purified from rabbit anti-serum by affinity-chromatography.
Dilution	WB 1:500-1:2000
Range	ELISA 1:40000
Formulation	PBS, 50% Glycerol, 0.5% BSA and 0.02% Sodium Azide.
Isotype	IgG
Storage	Store at -20°C for up to 1 year from the date of receipt, and avoid repeat freeze-thaw cycles.
Instruction	

TARGET INFORMATION

Gene ID	683
Gene Symbol	BST1
Uniprot ID	BST1_HUMAN
Immunogen	The antiserum was produced against synthesized peptide derived from human BST1 at amino acid range 71-120
Immunogen Region	40-120 Internal
Specificity	BST1 polyclonal antibody (Adp-Ribosyl Cyclase/Cyclic Adp-Ribose Hydrolase 2) binds to endogenous Adp-Ribosyl Cyclase/Cyclic Adp-Ribose Hydrolase 2 at the amino acid region 40-120 Internal.
Immunogen Sequence	



Western blot analysis of lysates from COS7 and Jurkat cells, using BST1 Antibody. The line on the right is blocked with the synthesized peptide.



Western blot analysis of various cells using BST-1 Polyclonal Antibody