

Anti-BRWD3 antibody (1720-1800 C-Term) (STJ91901)

STJ91901

GENERAL INFORMATION

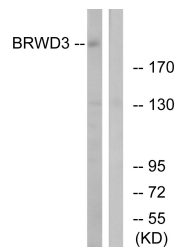
Product Type	Primary antibodies
Short Description	Rabbit polyclonal antibody anti-Bromodomain And Wd Repeat-Containing Protein 3 (1720-1800 C-Term) is suitable for use in Western Blot, Immunohistochemistry, Immunofluorescence and ELISA research applications.
Applications	WB, IHC-P, IF-P, ELISA
Host/Source	Rabbit
Reactivity	Human, Mouse

PRODUCT PROPERTIES

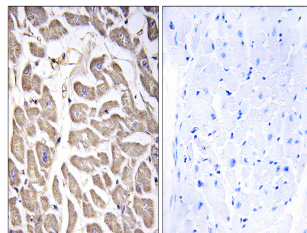
Clonality	Polyclonal
Clone ID	
Concentration	1 mg/mL
Conjugation	Unconjugated
Purification	The antibody was affinity-purified from rabbit anti-serum by affinity-chromatography.
Dilution Range	WB 1:500-1:2000 IHC 1:100-1:300 ELISA 1:40000
Formulation	PBS, 50% Glycerol, 0.5% BSA and 0.02% Sodium Azide.
Isotype	IgG
Storage Instruction	Store at -20°C for up to 1 year from the date of receipt, and avoid repeat freeze-thaw cycles.

TARGET INFORMATION

Gene ID	254065
Gene Symbol	BRWD3
Uniprot ID	BRWD3_HUMAN
Immunogen	The antiserum was produced against synthesized peptide derived from human BRWD3 at amino acid range 1751-1800
Immunogen Region	1720-1800 C-Term
Specificity	BRWD3 polyclonal antibody (Bromodomain And Wd Repeat-Containing Protein 3) binds to endogenous Bromodomain And Wd Repeat-Containing Protein 3 at the amino acid region 1720-1800 C-Term.
Immunogen Sequence	



Western blot analysis of lysates from COLO cells, using BRWD3 Antibody. The lane on the right is blocked with the synthesized peptide.



Immunohistochemistry analysis of paraffin-embedded human heart tissue, using BRWD3 Antibody. The picture on the right is blocked with the synthesized peptide.