

Anti-BRS3 antibody (140-220 Internal) (STJ91898)

STJ91898

GENERAL INFORMATION

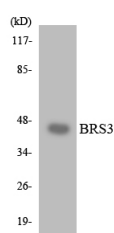
Product Type	Primary antibodies
Short Description	Rabbit polyclonal antibody anti-Bombesin Receptor Subtype-3 (140-220 Internal) is suitable for use in Western Blot, Immunofluorescence, Immunocytochemistry and ELISA research applications.
Applications	WB, IF, ICC, ELISA
Host/Source	Rabbit
Reactivity	Human, Rat, Mouse

PRODUCT PROPERTIES

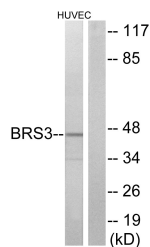
Clonality	Polyclonal
Clone ID	
Concentration	1 mg/mL
Conjugation	Unconjugated
Purification	The antibody was affinity-purified from rabbit anti-serum by affinity-chromatography.
Dilution Range	WB 1:500-1:2000 IF 1:200-1:1000 ELISA 1:40000
Formulation	PBS, 50% Glycerol, 0.5% BSA and 0.02% Sodium Azide.
Isotype	IgG
Storage Instruction	Store at -20°C for up to 1 year from the date of receipt, and avoid repeat freeze-thaw cycles.

TARGET INFORMATION

Gene ID	680
Gene Symbol	BRS3
Uniprot ID	BRS3_HUMAN
Immunogen	The antiserum was produced against synthesized peptide derived from human BRS3 at amino acid range 161-210
Immunogen Region	140-220 Internal
Specificity	BRS3 polyclonal antibody (Bombesin Receptor Subtype-3) binds to endogenous Bombesin Receptor Subtype-3 at the amino acid region 140-220 Internal.
Immunogen Sequence	



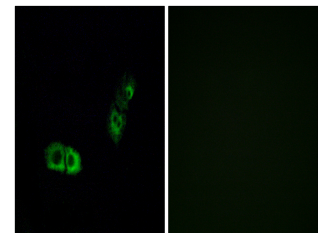
Western blot analysis of the lysates from HT-29 cells using BRS3 antibody.



Western blot analysis of lysates from HUVEC cells, using BRS3 Antibody. The lane on the right is blocked with the synthesized peptide.



Western blot analysis of HuvEc cells using BRS-3 Polyclonal Antibody



Immunofluorescence analysis of A549 cells, using BRS3 Antibody. The picture on the right is blocked with the synthesized peptide.

This product is suitable for in-vitro studies under the RESEARCH USE ONLY [RUO] licence. This product must not be used as for diagnostic or other medical purposes.
St John's Laboratory Ltd, Knowledge Dock Business Centre, University Way, London, E16 2RD | Tel: 0208 223 3081