

Anti-MPC2 antibody (1-80 Internal) (STJ91896)

STJ91896

GENERAL INFORMATION

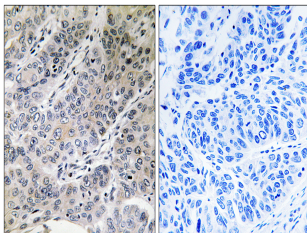
Product Type	Primary antibodies
Short Description	Rabbit polyclonal antibody anti-Mitochondrial Pyruvate Carrier 2 (1-80 Internal) is suitable for use in Immunohistochemistry, Immunofluorescence and ELISA research applications.
Applications	IHC-P, IF-P, ELISA
Host/Source	Rabbit
Reactivity	Human, Mouse, Rat

PRODUCT PROPERTIES

Clonality	Polyclonal
Clone ID	
Concentration	1 mg/mL
Conjugation	Unconjugated
Purification	The antibody was affinity-purified from rabbit anti-serum by affinity-chromatography.
Dilution Range	IHC 1:100-1:300 ELISA 1:40000
Formulation	PBS, 50% Glycerol, 0.5% BSA and 0.02% Sodium Azide.
Isotype	IgG
Storage	Store at -20°C for up to 1 year from the date of receipt, and avoid repeat freeze-thaw cycles.
Instruction	

TARGET INFORMATION

Gene ID	25874
Gene Symbol	MPC2
Uniprot ID	MPC2_HUMAN
Immunogen	The antiserum was produced against synthesized peptide derived from human BRP44 at amino acid range 31-80
Immunogen Region	1-80 Internal
Specificity	MPC2 polyclonal antibody (Mitochondrial Pyruvate Carrier 2) binds to endogenous Mitochondrial Pyruvate Carrier 2 at the amino acid region 1-80 Internal.
Immunogen Sequence	



Immunohistochemistry analysis of paraffin-embedded human lung carcinoma tissue, using BRP44 Antibody. The picture on the right is blocked with the synthesized peptide.