

Anti-HGH1 antibody (220-300 Internal) (STJ91895)

STJ91895

GENERAL INFORMATION

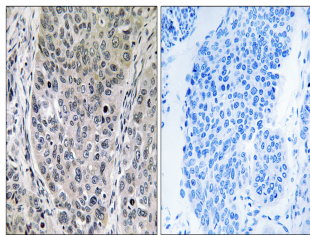
Product Type	Primary antibodies
Short Description	Rabbit polyclonal antibody anti-Protein Hgh1 Homolog (220-300 Internal) is suitable for use in Western Blot, Immunohistochemistry, Immunofluorescence and ELISA research applications.
Applications	WB, IHC-P, IF-P, ELISA
Host/Source	Rabbit
Reactivity	Human, Mouse, Rat

PRODUCT PROPERTIES

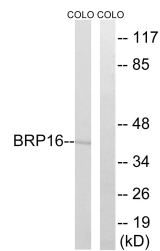
Clonality	Polyclonal
Clone ID	
Concentration	1 mg/mL
Conjugation	Unconjugated
Purification	The antibody was affinity-purified from rabbit anti-serum by affinity-chromatography.
Dilution Range	WB 1:500-1:2000 IHC 1:100-1:300 ELISA 1:40000
Formulation	PBS, 50% Glycerol, 0.5% BSA and 0.02% Sodium Azide.
Isotype	IgG
Storage Instruction	Store at -20°C for up to 1 year from the date of receipt, and avoid repeat freeze-thaw cycles.

TARGET INFORMATION

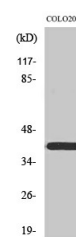
Gene ID	51236
Gene Symbol	HGH1
Uniprot ID	HGH1_HUMAN
Immunogen	The antiserum was produced against synthesized peptide derived from human BRP16 at amino acid range 251-300
Immunogen Region	220-300 Internal
Specificity	HGH1 polyclonal antibody (Protein Hgh1 Homolog) binds to endogenous Protein Hgh1 Homolog at the amino acid region 220-300 Internal.
Immunogen Sequence	



Immunohistochemistry analysis of paraffin-embedded human lung carcinoma tissue, using BRP16 Antibody. The picture on the right is blocked with the synthesized peptide.



Western blot analysis of lysates from COLO cells, using BRP16 Antibody. The lane on the right is blocked with the synthesized peptide.



Western blot analysis of various cells using Brp16 Polyclonal Antibody