

Anti-BRMS1 antibody (40-120 Internal) (STJ91892)

STJ91892

GENERAL INFORMATION

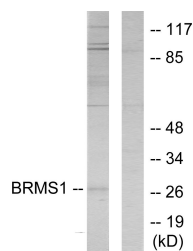
Product Type	Primary antibodies
Short Description	Rabbit polyclonal antibody anti-Breast Cancer Metastasis-Suppressor 1 (40-120 Internal) is suitable for use in Western Blot, Immunohistochemistry, Immunofluorescence and ELISA research applications.
Applications	WB, IHC-P, IF-P, ELISA
Host/Source	Rabbit
Reactivity	Human, Mouse, Rat

PRODUCT PROPERTIES

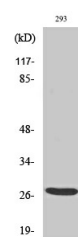
Clonality	Polyclonal
Clone ID	
Concentration	1 mg/mL
Conjugation	Unconjugated
Purification	The antibody was affinity-purified from rabbit anti-serum by affinity-chromatography.
Dilution Range	WB 1:500-1:2000 IHC 1:100-1:300 ELISA 1:20000
Formulation	PBS, 50% Glycerol, 0.5% BSA and 0.02% Sodium Azide.
Isotype	IgG
Storage Instruction	Store at -20°C for up to 1 year from the date of receipt, and avoid repeat freeze-thaw cycles.

TARGET INFORMATION

Gene ID	25855
Gene Symbol	BRMS1
Uniprot ID	BRMS1_HUMAN
Immunogen	The antiserum was produced against synthesized peptide derived from human BRMS1 at amino acid range 21-70
Immunogen Region	40-120 Internal
Specificity	BRMS1 polyclonal antibody (Breast Cancer Metastasis-Suppressor 1) binds to endogenous Breast Cancer Metastasis-Suppressor 1 at the amino acid region 40-120 Internal.
Immunogen Sequence	



Western blot analysis of lysates from 293 cells, using BRMS1 Antibody. The lane on the right is blocked with the synthesized peptide.



Western blot analysis of various cells using BRMS-1 Polyclonal Antibody

This product is suitable for in-vitro studies under the RESEARCH USE ONLY [RUO] licence. This product must not be used as for diagnostic or other medical purposes.
St John's Laboratory Ltd, Knowledge Dock Business Centre, University Way, London, E16 2RD | Tel: 0208 223 3081