

Anti-PTK6 antibody (390-470) (STJ91890)

STJ91890

GENERAL INFORMATION

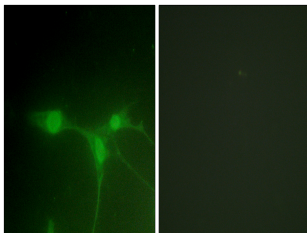
Product Type	Primary antibodies
Short Description	Rabbit polyclonal antibody anti-Protein-Tyrosine Kinase 6 (390-470) is suitable for use in Immunofluorescence, Immunocytochemistry and ELISA research applications.
Applications	IF, ICC, ELISA
Host/Source	Rabbit
Reactivity	Human, Rat, Mouse

PRODUCT PROPERTIES

Clonality	Polyclonal
Clone ID	
Concentration	1 mg/mL
Conjugation	Unconjugated
Purification	The antibody was affinity-purified from rabbit anti-serum by affinity-chromatography.
Dilution Range	IF 1:200-1:1000 ELISA 1:20000
Formulation	PBS, 50% Glycerol, 0.5% BSA and 0.02% Sodium Azide.
Isotype	IgG
Storage Instruction	Store at -20°C for up to 1 year from the date of receipt, and avoid repeat freeze-thaw cycles.

TARGET INFORMATION

Gene ID	5753
Gene Symbol	PTK6
Uniprot ID	PTK6_HUMAN
Immunogen	The antiserum was produced against synthesized peptide derived from human Breast Tumor Kinase at amino acid range 402-451
Immunogen Region	390-470
Specificity	PTK6 polyclonal antibody (Protein-Tyrosine Kinase 6) binds to endogenous Protein-Tyrosine Kinase 6 at the amino acid region 390-470.
Immunogen Sequence	



Immunofluorescence analysis of NIH/3T3 cells, using Breast Tumor Kinase Antibody. The picture on the right is blocked with the synthesized peptide.