

Anti-BRCA2 antibody (1-80 N-Term) (STJ91885)

STJ91885

GENERAL INFORMATION

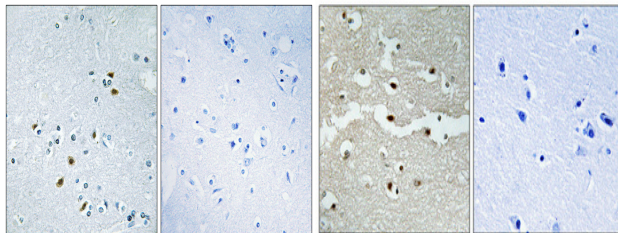
Product Type	Primary antibodies
Short Description	Rabbit polyclonal antibody anti-Breast Cancer Type 2 Susceptibility Protein (1-80 N-Term) is suitable for use in Immunohistochemistry, Immunofluorescence and ELISA research applications.
Applications	IHC-P, IF-P, ELISA
Host/Source	Rabbit
Reactivity	Human, Rat

PRODUCT PROPERTIES

Clonality	Polyclonal
Clone ID	
Concentration	1 mg/mL
Conjugation	Unconjugated
Purification	The antibody was affinity-purified from rabbit anti-serum by affinity-chromatography.
Dilution Range	IHC 1:100-1:300 ELISA 1:20000
Formulation	PBS, 50% Glycerol, 0.5% BSA and 0.02% Sodium Azide.
Isotype	IgG
Storage	Store at -20°C for up to 1 year from the date of receipt, and avoid repeat freeze-thaw cycles.
Instruction	

TARGET INFORMATION

Gene ID	675
Gene Symbol	BRCA2
Uniprot ID	BRCA2_HUMAN
Immunogen	The antiserum was produced against synthesized peptide derived from human BRCA2 at amino acid range 31-80
Immunogen Region	1-80 N-Term
Specificity	BRCA2 polyclonal antibody (Breast Cancer Type 2 Susceptibility Protein) binds to endogenous Breast Cancer Type 2 Susceptibility Protein at the amino acid region 1-80 N-Term.
Immunogen Sequence	



Immunohistochemistry analysis of paraffin-embedded human brain tissue, using BRCA2 Antibody. The picture on the right is blocked with the synthesized peptide.

Immunohistochemical analysis of paraffin-embedded Human brain. Antibody was diluted at 1:100 (4°C overnight). High-pressure and temperature Tris-EDTA, pH8.0 was used for antigen retrieval. Negative control (right) obtained from antibody was pre-absorbed by immunogen peptide.