

Anti-HMG20B antibody (10-90 N-Term) (STJ91880)

STJ91880

GENERAL INFORMATION

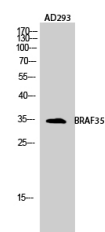
Product Type	Primary antibodies
Short Description	Rabbit polyclonal antibody anti-Swi/Snf-Related Matrix-Associated Actin-Dependent Regulator Of Chromatin Subfamily E Member 1-Related (10-90 N-Term) is suitable for use in Western Blot, Immunohistochemistry, Immunofluorescence, Immunocytochemistry and
Applications	WB, IHC-P, IF, ICC, ELISA
Host/Source	Rabbit
Reactivity	Human, Rat, Mouse

PRODUCT PROPERTIES

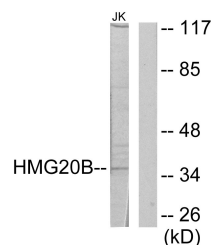
Clonality	Polyclonal
Clone ID	
Concentration	1 mg/mL
Conjugation	Unconjugated
Purification	The antibody was affinity-purified from rabbit anti-serum by affinity-chromatography.
Dilution Range	WB 1:500-1:2000 IHC 1:100-1:300 IF 1:200-1:1000 ELISA 1:20000
Formulation	PBS, 50% Glycerol, 0.5% BSA and 0.02% Sodium Azide.
Isotype	IgG
Storage Instruction	Store at -20°C for up to 1 year from the date of receipt, and avoid repeat freeze-thaw cycles.

TARGET INFORMATION

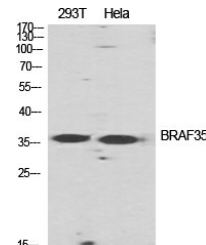
Gene ID	10362
Gene Symbol	HMG20B
Uniprot ID	HM20B_HUMAN
Immunogen	The antiserum was produced against synthesized peptide derived from human HMG20B at amino acid range 1-50
Immunogen Region	10-90 N-Term
Specificity	HMG20B polyclonal antibody (Swi/Snf-Related Matrix-Associated Actin-Dependent Regulator Of Chromatin Subfamily E Member 1-Related) binds to endogenous Swi/Snf-Related Matrix-Associated Actin-Dependent Regulator Of Chromatin Subfamily E Member 1-Relat
Immunogen Sequence	



Western blot analysis of AD293 cells using BRAF35 Polyclonal Antibody diluted at 1: 2000 cells nucleus extracted by Minute TM Cytoplasmic and Nuclear Fractionation kit (SC-003, Inventibiotech, MN, USA).



Western blot analysis of lysates from Jurkat cells, using HMG20B Antibody. The lane on the right is blocked with the synthesized peptide.



Western blot analysis of various cells using BRAF35 Polyclonal Antibody diluted at 1: 2000 cells nucleus extracted by Minute TM Cytoplasmic and Nuclear Fractionation kit (SC-003, Inventibiotech, MN, USA).

This product is suitable for in-vitro studies under the RESEARCH USE ONLY [RUO] licence. This product must not be used as for diagnostic or other medical purposes.
St John's Laboratory Ltd, Knowledge Dock Business Centre, University Way, London, E16 2RD | Tel: 0208 223 3081