

Anti-BNIP2 antibody (240-320 C-Term) (STJ91877)

STJ91877

GENERAL INFORMATION

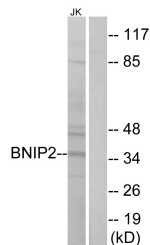
Product Type	Primary antibodies
Short Description	Rabbit polyclonal antibody anti-Bcl2/Adenovirus E1b 19 Kda Protein-Interacting Protein 2 (240-320 C-Term) is suitable for use in Western Blot, Immunofluorescence, Immunocytochemistry, Flow Cytometry and ELISA research applications.
Applications	WB, IF, ICC, FC, ELISA
Host/Source	Rabbit
Reactivity	Human, Rat, Mouse

PRODUCT PROPERTIES

Clonality	Polyclonal
Clone ID	
Concentration	1 mg/mL
Conjugation	Unconjugated
Purification	The antibody was affinity-purified from rabbit anti-serum by affinity-chromatography.
Dilution Range	WB 1:500-1:2000 IF 1:200-1:1000 FC 1:200-1:400 ELISA 1:40000
Formulation	PBS, 50% Glycerol, 0.5% BSA and 0.02% Sodium Azide.
Isotype	IgG
Storage Instruction	Store at -20°C for up to 1 year from the date of receipt, and avoid repeat freeze-thaw cycles.

TARGET INFORMATION

Gene ID	663
Gene Symbol	BNIP2
Uniprot ID	BNIP2_HUMAN
Immunogen	The antiserum was produced against synthesized peptide derived from human BNIP2 at amino acid range 265-314
Immunogen Region	240-320 C-Term
Specificity	BNIP2 polyclonal antibody (Bcl2/Adenovirus E1b 19 Kda Protein-Interacting Protein 2) binds to endogenous Bcl2/Adenovirus E1b 19 Kda Protein-Interacting Protein 2 at the amino acid region 240-320 C-Term.
Immunogen Sequence	



Western blot analysis of lysates from Jurkat cells, using BNIP2 Antibody. The lane on the right is blocked with the synthesized peptide.

This product is suitable for in-vitro studies under the RESEARCH USE ONLY [RUO] licence. This product must not be used as for diagnostic or other medical purposes.
St John's Laboratory Ltd, Knowledge Dock Business Centre, University Way, London, E16 2RD | Tel: 0208 223 3081