

## Anti-BMP8B antibody (230-310 Internal) (STJ91871)

STJ91871

### GENERAL INFORMATION

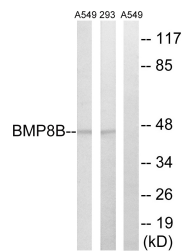
<b>Product Type</b>	Primary antibodies
<b>Short Description</b>	Rabbit polyclonal antibody anti-Bone Morphogenetic Protein 8b (230-310 Internal) is suitable for use in Western Blot and ELISA research applications.
<b>Applications</b>	WB, ELISA
<b>Host/Source</b>	Rabbit
<b>Reactivity</b>	Human, Rat, Mouse

### PRODUCT PROPERTIES

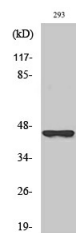
<b>Clonality</b>	Polyclonal
<b>Clone ID</b>	
<b>Concentration</b>	1 mg/mL
<b>Conjugation</b>	Unconjugated
<b>Purification</b>	The antibody was affinity-purified from rabbit anti-serum by affinity-chromatography.
<b>Dilution Range</b>	WB 1:500-1:2000 ELISA 1:40000
<b>Formulation</b>	PBS, 50% Glycerol, 0.5% BSA and 0.02% Sodium Azide.
<b>Isotype</b>	IgG
<b>Storage</b>	Store at -20°C for up to 1 year from the date of receipt, and avoid repeat freeze-thaw cycles.
<b>Instruction</b>	

### TARGET INFORMATION

<b>Gene ID</b>	656
<b>Gene Symbol</b>	BMP8B
<b>Uniprot ID</b>	BMP8B_HUMAN
<b>Immunogen</b>	The antiserum was produced against synthesized peptide derived from human BMP8B at amino acid range 261-310
<b>Immunogen Region</b>	230-310 Internal
<b>Specificity</b>	BMP8B polyclonal antibody (Bone Morphogenetic Protein 8b) binds to endogenous Bone Morphogenetic Protein 8b at the amino acid region 230-310 Internal.
<b>Immunogen Sequence</b>	



Western blot analysis of lysates from 293 and A549 cells, using BMP8B Antibody. The lane on the right is blocked with the synthesized peptide.



Western blot analysis of various cells using BMP-8B Polyclonal Antibody diluted at 1: 2000

This product is suitable for in-vitro studies under the RESEARCH USE ONLY [RUO] licence. This product must not be used as for diagnostic or other medical purposes.  
St John's Laboratory Ltd, Knowledge Dock Business Centre, University Way, London, E16 2RD | Tel: 0208 223 3081