

## Anti-BMP-8 antibody (Internal) (STJ91869)

STJ91869

### GENERAL INFORMATION

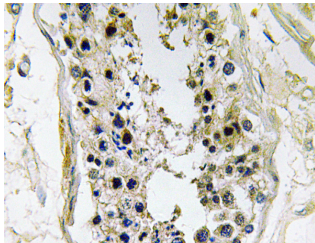
<b>Product Type</b>	Primary antibodies
<b>Short Description</b>	Rabbit polyclonal antibody anti-Bone morphogenetic protein 8B and Bone morphogenetic protein 8A (Internal) is suitable for use in Immunohistochemistry, Immunofluorescence and ELISA research applications.
<b>Applications</b>	IHC-P, IF-P, ELISA
<b>Host/Source</b>	Rabbit
<b>Reactivity</b>	Human, Rat, Mouse

### PRODUCT PROPERTIES

<b>Clonality</b>	Polyclonal
<b>Clone ID</b>	
<b>Concentration</b>	1 mg/mL
<b>Conjugation</b>	Unconjugated
<b>Purification</b>	The antibody was affinity-purified from rabbit anti-serum by affinity-chromatography.
<b>Dilution</b>	IHC 1:100-1:300
<b>Range</b>	ELISA 1:40000
<b>Formulation</b>	PBS, 50% Glycerol, 0.5% BSA and 0.02% Sodium Azide.
<b>Isotype</b>	IgG
<b>Storage</b>	Store at -20°C for up to 1 year from the date of receipt, and avoid repeat freeze-thaw cycles.
<b>Instruction</b>	

### TARGET INFORMATION

<b>Gene ID</b>	<a href="#">656</a>
	<a href="#">353500</a>
<b>Gene Symbol</b>	<a href="#">BMP8B</a>
	<a href="#">BMP8A</a>
<b>Uniprot ID</b>	<a href="#">BMP8B_HUMAN</a>
	<a href="#">BMP8A_HUMAN</a>
<b>Immunogen</b>	The antiserum was produced against synthesized peptide derived from human BMP-8 at amino acid range 41-90
<b>Immunogen Region</b>	Internal
<b>Specificity</b>	BMP-8 polyclonal antibody (Bone morphogenetic protein 8B and Bone morphogenetic protein 8A) binds to endogenous Bone morphogenetic protein 8B and Bone morphogenetic protein 8A at the amino acid region Internal.
<b>Immunogen Sequence</b>	



Immunohistochemistry analysis of BMP-8 antibody in paraffin-embedded human testis tissue.