

Anti-BMP5 antibody (317-350 Internal) (STJ91866)

STJ91866

GENERAL INFORMATION

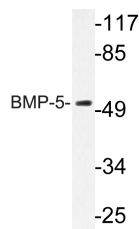
Product Type	Primary antibodies
Short Description	Rabbit polyclonal antibody anti-Bone Morphogenetic Protein 5 (317-350 Internal) is suitable for use in Western Blot, Immunohistochemistry, Immunofluorescence and ELISA research applications.
Applications	WB, IHC-P, IF-P, ELISA
Host/Source	Rabbit
Reactivity	Human, Mouse

PRODUCT PROPERTIES

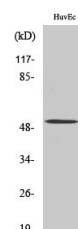
Clonality	Polyclonal
Clone ID	
Concentration	1 mg/mL
Conjugation	Unconjugated
Purification	The antibody was affinity-purified from rabbit anti-serum by affinity-chromatography.
Dilution Range	WB 1:500-1:2000 IHC 1:100-1:300 ELISA 1:40000
Formulation	PBS, 50% Glycerol, 0.5% BSA and 0.02% Sodium Azide.
Isotype	IgG
Storage Instruction	Store at -20°C for up to 1 year from the date of receipt, and avoid repeat freeze-thaw cycles.

TARGET INFORMATION

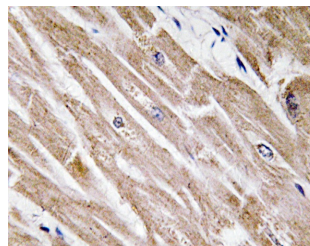
Gene ID	653
Gene Symbol	BMP5
Uniprot ID	BMP5_HUMAN
Immunogen	The antiserum was produced against synthesized peptide derived from human BMP-5 at amino acid range 114-163
Immunogen Region	317-350 Internal
Specificity	BMP5 polyclonal antibody (Bone Morphogenetic Protein 5) binds to endogenous Bone Morphogenetic Protein 5 at the amino acid region 317-350 Internal.
Immunogen Sequence	



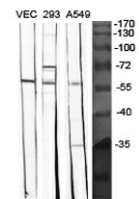
Western blot analysis of lysate from HUVEC cells, using BMP-5 antibody.



Western blot analysis of HeLa cells using BMP-5 Polyclonal Antibody diluted at 1: 1000



Immunohistochemistry analysis of BMP-5 antibody in paraffin-embedded human heart tissue.



Western blot analysis of various cells using BMP-5 Polyclonal Antibody diluted at 1: 1000

This product is suitable for in-vitro studies under the RESEARCH USE ONLY [RUO] licence. This product must not be used as for diagnostic or other medical purposes.
St John's Laboratory Ltd, Knowledge Dock Business Centre, University Way, London, E16 2RD | Tel: 0208 223 3081