

## Anti-BMP2 antibody (Internal) (STJ91863)

STJ91863

### GENERAL INFORMATION

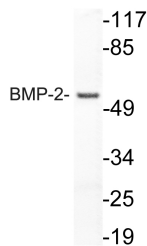
<b>Product Type</b>	Primary antibodies
<b>Short Description</b>	Rabbit polyclonal antibody anti-Bone Morphogenetic Protein 2 (Internal) is suitable for use in Western Blot, Immunohistochemistry, Immunofluorescence and ELISA research applications.
<b>Applications</b>	WB, IHC-P, IF-P, ELISA
<b>Host/Source</b>	Rabbit
<b>Reactivity</b>	Human, Mouse, Rat

### PRODUCT PROPERTIES

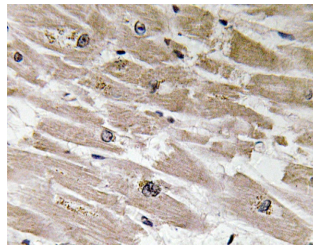
<b>Clonality</b>	Polyclonal
<b>Clone ID</b>	
<b>Concentration</b>	1 mg/mL
<b>Conjugation</b>	Unconjugated
<b>Purification</b>	The antibody was affinity-purified from rabbit anti-serum by affinity-chromatography.
<b>Dilution Range</b>	WB 1:500-1:2000 IHC 1:100-1:300 ELISA 1:20000
<b>Formulation</b>	PBS, 50% Glycerol, 0.5% BSA and 0.02% Sodium Azide.
<b>Isotype</b>	IgG
<b>Storage Instruction</b>	Store at -20°C for up to 1 year from the date of receipt, and avoid repeat freeze-thaw cycles.

### TARGET INFORMATION

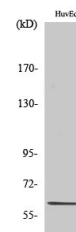
<b>Gene ID</b>	650
<b>Gene Symbol</b>	BMP2
<b>Uniprot ID</b>	BMP2_HUMAN
<b>Immunogen</b>	The antiserum was produced against synthesized peptide derived from human BMP-2 at amino acid range 226-275
<b>Immunogen Region</b>	Internal
<b>Specificity</b>	BMP2 polyclonal antibody (Bone Morphogenetic Protein 2) binds to endogenous Bone Morphogenetic Protein 2 at the amino acid region Internal.
<b>Immunogen Sequence</b>	



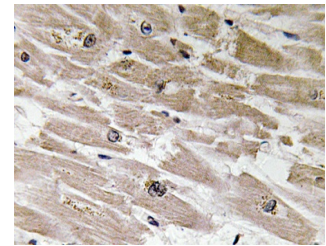
Western blot analysis of lysate from HUVECCells, using BMP-2 antibody.



Immunohistochemistry analysis of BMP-2 antibody in paraffin-embedded human heart tissue.



Western blot analysis of HuvEc cells using BMP-2 Polyclonal Antibody diluted at 1: 500



Immunohistochemistry of paraffin-embedded human heart tissue using antibody at dilution 1:100

This product is suitable for in-vitro studies under the RESEARCH USE ONLY [RUO] licence. This product must not be used as for diagnostic or other medical purposes.  
St John's Laboratory Ltd, Knowledge Dock Business Centre, University Way, London, E16 2RD | Tel: 0208 223 3081