

Anti-BLNK antibody (40-120) (STJ91859)

STJ91859

GENERAL INFORMATION

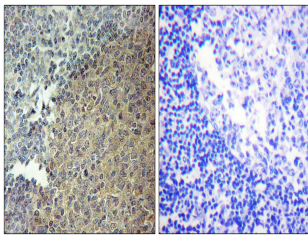
Product Type	Primary antibodies
Short Description	Rabbit polyclonal antibody anti-B-Cell Linker Protein (40-120) is suitable for use in Western Blot, Immunohistochemistry, Immunofluorescence and ELISA research applications.
Applications	WB, IHC-P, IF-P, ELISA
Host/Source	Rabbit
Reactivity	Human, Mouse

PRODUCT PROPERTIES

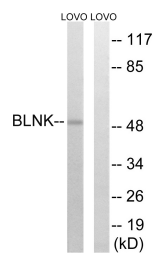
Clonality	Polyclonal
Clone ID	
Concentration	1 mg/mL
Conjugation	Unconjugated
Purification	The antibody was affinity-purified from rabbit anti-serum by affinity-chromatography.
Dilution Range	WB 1:500-1:2000 IHC 1:100-1:300 ELISA 1:20000
Formulation	PBS, 50% Glycerol, 0.5% BSA and 0.02% Sodium Azide.
Isotype	IgG
Storage Instruction	Store at -20°C for up to 1 year from the date of receipt, and avoid repeat freeze-thaw cycles.

TARGET INFORMATION

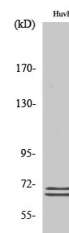
Gene ID	29760
Gene Symbol	BLNK
Uniprot ID	BLNK_HUMAN
Immunogen	The antiserum was produced against synthesized peptide derived from human BLNK at amino acid range 62-111
Immunogen Region	40-120
Specificity	BLNK polyclonal antibody (B-Cell Linker Protein) binds to endogenous B-Cell Linker Protein at the amino acid region 40-120.
Immunogen Sequence	



Immunohistochemistry analysis of paraffin-embedded human tonsil tissue, using BLNK Antibody. The picture on the right is blocked with the synthesized peptide.



Western blot analysis of lysates from LOVO cells, treated with etoposide 25µM 24h, using BLNK Antibody. The lane on the right is blocked with the synthesized peptide.



Western blot analysis of various cells using BLNK Polyclonal Antibody

This product is suitable for in-vitro studies under the RESEARCH USE ONLY [RUO] licence. This product must not be used as for diagnostic or other medical purposes.
St John's Laboratory Ltd, Knowledge Dock Business Centre, University Way, London, E16 2RD | Tel: 0208 223 3081