

## Anti-BLM antibody (40-120) (STJ91858)

STJ91858

### GENERAL INFORMATION

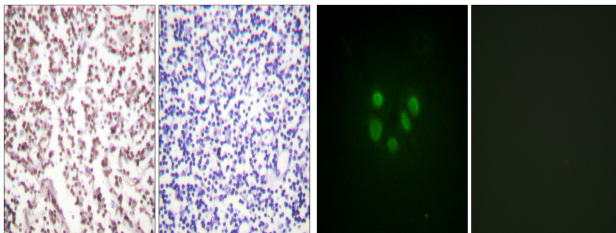
<b>Product Type</b>	Primary antibodies
<b>Short Description</b>	Rabbit polyclonal antibody anti-Bloom Syndrome Protein (40-120) is suitable for use in Immunohistochemistry, Immunofluorescence, Immunocytochemistry and ELISA research applications.
<b>Applications</b>	IHC-P, IF, ICC, ELISA
<b>Host/Source</b>	Rabbit
<b>Reactivity</b>	Human, Rat, Mouse

### PRODUCT PROPERTIES

<b>Clonality</b>	Polyclonal
<b>Clone ID</b>	
<b>Concentration</b>	1 mg/mL
<b>Conjugation</b>	Unconjugated
<b>Purification</b>	The antibody was affinity-purified from rabbit anti-serum by affinity-chromatography.
<b>Dilution Range</b>	IHC 1:100-1:300 IF 1:200-1:1000 ELISA 1:5000
<b>Formulation</b>	PBS, 50% Glycerol, 0.5% BSA and 0.02% Sodium Azide.
<b>Isotype</b>	IgG
<b>Storage Instruction</b>	Store at -20°C for up to 1 year from the date of receipt, and avoid repeat freeze-thaw cycles.

### TARGET INFORMATION

<b>Gene ID</b>	641
<b>Gene Symbol</b>	BLM
<b>Uniprot ID</b>	BLM_HUMAN
<b>Immunogen</b>	The antiserum was produced against synthesized peptide derived from human Bloom Syndrome at amino acid range 65-114
<b>Immunogen Region</b>	40-120
<b>Specificity</b>	BLM polyclonal antibody (Bloom Syndrome Protein) binds to endogenous Bloom Syndrome Protein at the amino acid region 40-120.
<b>Immunogen Sequence</b>	



Immunohistochemistry analysis of paraffin-embedded human lymph node tissue, using Bloom Syndrome Antibody. The picture on the right is blocked with the synthesized peptide.

Immunofluorescence analysis of A549 cells, using Bloom Syndrome Antibody. The picture on the right is blocked with the synthesized peptide.

This product is suitable for in-vitro studies under the RESEARCH USE ONLY [RUO] licence. This product must not be used as for diagnostic or other medical purposes.  
St John's Laboratory Ltd, Knowledge Dock Business Centre, University Way, London, E16 2RD | Tel: 0208 223 3081