

Anti-CARD19 antibody (40-120 Internal) (STJ91856)

STJ91856

GENERAL INFORMATION

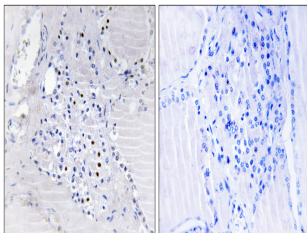
Product Type	Primary antibodies
Short Description	Rabbit polyclonal antibody anti-Caspase Recruitment Domain-Containing Protein 19 (40-120 Internal) is suitable for use in Immunohistochemistry, Immunofluorescence and ELISA research applications.
Applications	IHC-P, IF-P, ELISA
Host/Source	Rabbit
Reactivity	Human, Mouse

PRODUCT PROPERTIES

Clonality	Polyclonal
Clone ID	
Concentration	1 mg/mL
Conjugation	Unconjugated
Purification	The antibody was affinity-purified from rabbit anti-serum by affinity-chromatography.
Dilution	IHC 1:100-1:300
Range	ELISA 1:40000
Formulation	PBS, 50% Glycerol, 0.5% BSA and 0.02% Sodium Azide.
Isotype	IgG
Storage	Store at -20°C for up to 1 year from the date of receipt, and avoid repeat freeze-thaw cycles.
Instruction	

TARGET INFORMATION

Gene ID	84270
Gene Symbol	CARD19
Uniprot ID	CAR19_HUMAN
Immunogen	The antiserum was produced against synthesized peptide derived from human C9orf89 at amino acid range 21-70
Immunogen Region	40-120 Internal
Specificity	CARD19 polyclonal antibody (Caspase Recruitment Domain-Containing Protein 19) binds to endogenous Caspase Recruitment Domain-Containing Protein 19 at the amino acid region 40-120 Internal.
Immunogen Sequence	



Immunohistochemistry analysis of paraffin-embedded human thyroid gland tissue, using C9orf89 Antibody. The picture on the right is blocked with the synthesized peptide.