

Anti-BCL2L11 antibody (1-80 N-Term) (STJ91855)

STJ91855

GENERAL INFORMATION

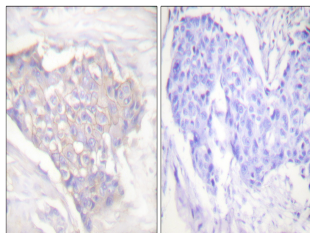
Product Type	Primary antibodies
Short Description	Rabbit polyclonal antibody anti-Bcl-2-Like Protein 11 (1-80 N-Term) is suitable for use in Western Blot, Immunohistochemistry, Immunofluorescence and ELISA research applications.
Applications	WB, IHC-P, IF-P, ELISA
Host/Source	Rabbit
Reactivity	Human, Mouse, Rat, Monkey

PRODUCT PROPERTIES

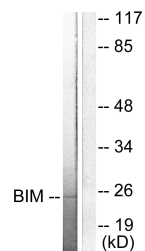
Clonality	Polyclonal
Clone ID	
Concentration	1 mg/mL
Conjugation	Unconjugated
Purification	The antibody was affinity-purified from rabbit anti-serum by affinity-chromatography.
Dilution Range	WB 1:500-1:2000 IHC 1:100-1:300 ELISA 1:20000
Formulation	PBS, 50% Glycerol, 0.5% BSA and 0.02% Sodium Azide.
Isotype	IgG
Storage Instruction	Store at -20°C for up to 1 year from the date of receipt, and avoid repeat freeze-thaw cycles.

TARGET INFORMATION

Gene ID	10018
Gene Symbol	BCL2L11
Uniprot ID	B2L11_HUMAN
Immunogen	The antiserum was produced against synthesized peptide derived from human BIM at amino acid range 1-50
Immunogen Region	1-80 N-Term
Specificity	BCL2L11 polyclonal antibody (Bcl-2-Like Protein 11) binds to endogenous Bcl-2-Like Protein 11 at the amino acid region 1-80 N-Term.
Immunogen Sequence	



Immunohistochemistry analysis of paraffin-embedded human breast carcinoma tissue, using BIM Antibody. The picture on the right is blocked with the synthesized peptide.



Western blot analysis of lysates from COS7 cells, using BIM Antibody. The lane on the right is blocked with the synthesized peptide.



Western blot analysis of various cells using Bim Polyclonal Antibody