

Anti-TRAPPC3 antibody (100-180 C-Term) (STJ91851)

STJ91851

GENERAL INFORMATION

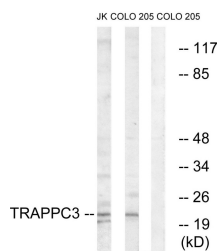
Product Type	Primary antibodies
Short Description	Rabbit polyclonal antibody anti-Trafficking Protein Particle Complex Subunit 3 (100-180 C-Term) is suitable for use in Western Blot, Immunohistochemistry, Immunofluorescence and ELISA research applications.
Applications	WB, IHC-P, IF-P, ELISA
Host/Source	Rabbit
Reactivity	Human, Mouse, Rat

PRODUCT PROPERTIES

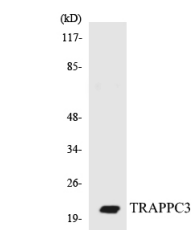
Clonality	Polyclonal
Clone ID	
Concentration	1 mg/mL
Conjugation	Unconjugated
Purification	The antibody was affinity-purified from rabbit anti-serum by affinity-chromatography.
Dilution Range	WB 1:500-1:2000 IHC 1:100-1:300 ELISA 1:5000
Formulation	PBS, 50% Glycerol, 0.5% BSA and 0.02% Sodium Azide.
Isotype	IgG
Storage Instruction	Store at -20°C for up to 1 year from the date of receipt, and avoid repeat freeze-thaw cycles.

TARGET INFORMATION

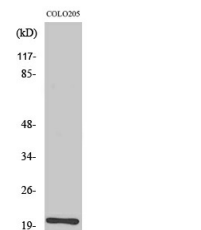
Gene ID	27095
Gene Symbol	TRAPPC3
Uniprot ID	TPPC3_HUMAN
Immunogen	The antiserum was produced against synthesized peptide derived from human TRAPPC3 at amino acid range 131-180
Immunogen Region	100-180 C-Term
Specificity	TRAPPC3 polyclonal antibody (Trafficking Protein Particle Complex Subunit 3) binds to endogenous Trafficking Protein Particle Complex Subunit 3 at the amino acid region 100-180 C-Term.
Immunogen Sequence	



Western blot analysis of lysates from COLO and Jurkat cells, using TRAPPC3 Antibody. The lane on the right is blocked with the synthesized peptide.



Western blot analysis of the lysates from COLO205 cells using TRAPPC3 antibody.



Western blot analysis of various cells using BET3 Polyclonal Antibody diluted at 1: 500.

This product is suitable for in-vitro studies under the RESEARCH USE ONLY [RUO] licence. This product must not be used as for diagnostic or other medical purposes.
St John's Laboratory Ltd, Knowledge Dock Business Centre, University Way, London, E16 2RD | Tel: 0208 223 3081