

Anti-BEGAIN antibody (480-560 C-Term) (STJ91849)

STJ91849

GENERAL INFORMATION

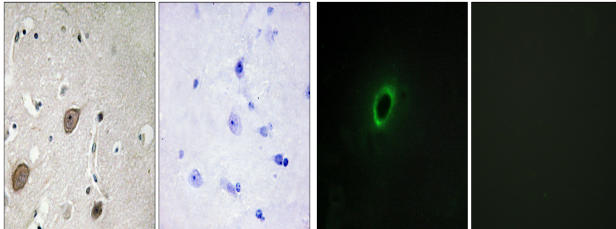
Product Type	Primary antibodies
Short Description	Rabbit polyclonal antibody anti-Brain-Enriched Guanylate Kinase-Associated Protein (480-560 C-Term) is suitable for use in Western Blot, Immunohistochemistry, Immunofluorescence, Immunocytochemistry and ELISA research applications.
Applications	WB, IHC-P, IF, ICC, ELISA
Host/Source	Rabbit
Reactivity	Human, Mouse, Rat

PRODUCT PROPERTIES

Clonality	Polyclonal
Clone ID	
Concentration	1 mg/mL
Conjugation	Unconjugated
Purification	The antibody was affinity-purified from rabbit anti-serum by affinity-chromatography.
Dilution Range	WB 1:500-1:2000 IHC 1:100-1:300 IF 1:200-1:1000 ELISA 1:5000
Formulation	PBS, 50% Glycerol, 0.5% BSA and 0.02% Sodium Azide.
Isotype	IgG
Storage Instruction	Store at -20°C for up to 1 year from the date of receipt, and avoid repeat freeze-thaw cycles.

TARGET INFORMATION

Gene ID	57596
Gene Symbol	BEGAIN
Uniprot ID	BEGIN_HUMAN
Immunogen	The antiserum was produced against synthesized peptide derived from human BEGIN at amino acid range 511-560
Immunogen Region	480-560 C-Term
Specificity	BEGAIN polyclonal antibody (Brain-Enriched Guanylate Kinase-Associated Protein) binds to endogenous Brain-Enriched Guanylate Kinase-Associated Protein at the amino acid region 480-560 C-Term.
Immunogen Sequence	



Immunohistochemistry analysis of paraffin-embedded human brain tissue, using BEGIN Antibody. The picture on the right is blocked with the synthesized peptide.

Immunofluorescence analysis of HeLa cells, using BEGIN Antibody. The picture on the right is blocked with the synthesized peptide.

This product is suitable for in-vitro studies under the RESEARCH USE ONLY [RUO] licence. This product must not be used as for diagnostic or other medical purposes.
St John's Laboratory Ltd, Knowledge Dock Business Centre, University Way, London, E16 2RD | Tel: 0208 223 3081