

Anti-VWA5A antibody (340-420 Internal) (STJ91848)

STJ91848

GENERAL INFORMATION

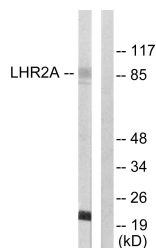
Product Type	Primary antibodies
Short Description	Rabbit polyclonal antibody anti-Von Willebrand Factor A Domain-Containing Protein 5a (340-420 Internal) is suitable for use in Western Blot and ELISA research applications.
Applications	WB, ELISA
Host/Source	Rabbit
Reactivity	Human, Rat, Mouse

PRODUCT PROPERTIES

Clonality	Polyclonal
Clone ID	
Concentration	1 mg/mL
Conjugation	Unconjugated
Purification	The antibody was affinity-purified from rabbit anti-serum by affinity-chromatography.
Dilution	WB 1:500-1:2000
Range	ELISA 1:20000
Formulation	PBS, 50% Glycerol, 0.5% BSA and 0.02% Sodium Azide.
Isotype	IgG
Storage	Store at -20°C for up to 1 year from the date of receipt, and avoid repeat freeze-thaw cycles.
Instruction	

TARGET INFORMATION

Gene ID	4013
Gene Symbol	VWA5A
Uniprot ID	VMA5A_HUMAN
Immunogen	The antiserum was produced against synthesized peptide derived from human LHR2A at amino acid range 371-420
Immunogen Region	340-420 Internal
Specificity	VWA5A polyclonal antibody (Von Willebrand Factor A Domain-Containing Protein 5a) binds to endogenous Von Willebrand Factor A Domain-Containing Protein 5a at the amino acid region 340-420 Internal.
Immunogen Sequence	



Western blot analysis of lysates from 293 cells, using LHR2A Antibody. The lane on the right is blocked with the synthesized peptide.



Western blot analysis of various cells using BCSC-1 Polyclonal Antibody