

Anti-BCAS4 antibody (1-80 Internal) (STJ91831)

STJ91831

GENERAL INFORMATION

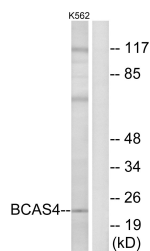
Product Type	Primary antibodies
Short Description	Rabbit polyclonal antibody anti-Breast Carcinoma-Amplified Sequence 4 (1-80 Internal) is suitable for use in Western Blot, Immunohistochemistry, Immunofluorescence and ELISA research applications.
Applications	WB, IHC-P, IF-P, ELISA
Host/Source	Rabbit
Reactivity	Human, Rat, Mouse

PRODUCT PROPERTIES

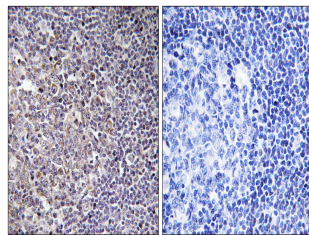
Clonality	Polyclonal
Clone ID	
Concentration	1 mg/mL
Conjugation	Unconjugated
Purification	The antibody was affinity-purified from rabbit anti-serum by affinity-chromatography.
Dilution Range	WB 1:500-1:2000 IHC 1:100-1:300 ELISA 1:20000
Formulation	PBS, 50% Glycerol, 0.5% BSA and 0.02% Sodium Azide.
Isotype	IgG
Storage Instruction	Store at -20°C for up to 1 year from the date of receipt, and avoid repeat freeze-thaw cycles.

TARGET INFORMATION

Gene ID	55653
Gene Symbol	BCAS4
Uniprot ID	BCAS4_HUMAN
Immunogen	The antiserum was produced against synthesized peptide derived from human BCAS4 at amino acid range 31-80
Immunogen Region	1-80 Internal
Specificity	BCAS4 polyclonal antibody (Breast Carcinoma-Amplified Sequence 4) binds to endogenous Breast Carcinoma-Amplified Sequence 4 at the amino acid region 1-80 Internal.
Immunogen Sequence	



Western blot analysis of lysates from K562 cells, using BCAS4 Antibody. The lane on the right is blocked with the synthesized peptide.



Immunohistochemistry analysis of paraffin-embedded human tonsil tissue, using BCAS4 Antibody. The picture on the right is blocked with the synthesized peptide.