

## Anti-BCAS3 antibody (660-740 Internal) (STJ91830)

STJ91830

### GENERAL INFORMATION

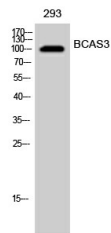
<b>Product Type</b>	Primary antibodies
<b>Short Description</b>	Rabbit polyclonal antibody anti-Bcas3 Microtubule Associated Cell Migration Factor (660-740 Internal) is suitable for use in Western Blot and ELISA research applications.
<b>Applications</b>	WB, ELISA
<b>Host/Source</b>	Rabbit
<b>Reactivity</b>	Human, Mouse

### PRODUCT PROPERTIES

<b>Clonality</b>	Polyclonal
<b>Clone ID</b>	
<b>Concentration</b>	1 mg/mL
<b>Conjugation</b>	Unconjugated
<b>Purification</b>	The antibody was affinity-purified from rabbit anti-serum by affinity-chromatography.
<b>Dilution</b>	WB 1:500-1:2000
<b>Range</b>	ELISA 1:5000
<b>Formulation</b>	PBS, 50% Glycerol, 0.5% BSA and 0.02% Sodium Azide.
<b>Isotype</b>	IgG
<b>Storage</b>	Store at -20°C for up to 1 year from the date of receipt, and avoid repeat freeze-thaw cycles.
<b>Instruction</b>	

### TARGET INFORMATION

<b>Gene ID</b>	54828
<b>Gene Symbol</b>	BCAS3
<b>Uniprot ID</b>	BCAS3_HUMAN
<b>Immunogen</b>	Synthesized peptide derived from BCAS3. at amino acid range: 660-740
<b>Immunogen Region</b>	660-740 Internal
<b>Specificity</b>	BCAS3 polyclonal antibody (Bcas3 Microtubule Associated Cell Migration Factor) binds to endogenous Bcas3 Microtubule Associated Cell Migration Factor at the amino acid region 660-740 Internal.
<b>Immunogen Sequence</b>	



Western blot analysis of 293 cells using BCAS3 Polyclonal Antibody cells nucleus extracted by Minute TM Cytoplasmic and Nuclear Fractionation kit (SC-003, Inventibiotech, MN, USA).