

Anti-BCAS2 antibody (150-230 C-Term) (STJ91829)

STJ91829

GENERAL INFORMATION

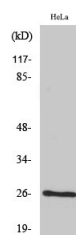
Product Type	Primary antibodies
Short Description	Rabbit polyclonal antibody anti-Pre-Mrna-Splicing Factor Spf27 (150-230 C-Term) is suitable for use in Western Blot and ELISA research applications.
Applications	WB, ELISA
Host/Source	Rabbit
Reactivity	Human, Mouse, Rat, Monkey

PRODUCT PROPERTIES

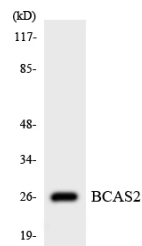
Clonality	Polyclonal
Clone ID	
Concentration	1 mg/mL
Conjugation	Unconjugated
Purification	The antibody was affinity-purified from rabbit anti-serum by affinity-chromatography.
Dilution Range	WB 1:500-1:2000 ELISA 1:5000
Formulation	PBS, 50% Glycerol, 0.5% BSA and 0.02% Sodium Azide.
Isotype	IgG
Storage	Store at -20°C for up to 1 year from the date of receipt, and avoid repeat freeze-thaw cycles.
Instruction	

TARGET INFORMATION

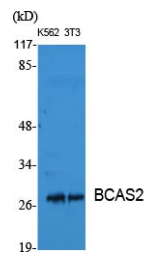
Gene ID	10286
Gene Symbol	BCAS2
Uniprot ID	SPF27_HUMAN
Immunogen	The antiserum was produced against synthesized peptide derived from human BCAS2 at amino acid range 176-225
Immunogen Region	150-230 C-Term
Specificity	BCAS2 polyclonal antibody (Pre-Mrna-Splicing Factor Spf27) binds to endogenous Pre-Mrna-Splicing Factor Spf27 at the amino acid region 150-230 C-Term.
Immunogen Sequence	



Western blot analysis of COS7 cells using BCAS2 Polyclonal Antibody diluted at 1: 1000 cells nucleus extracted by Minute TM Cytoplasmic and Nuclear Fractionation kit (SC-003, Inventibiotech, MN, USA).



Western blot analysis of the lysates from HUVEC cells using BCAS2 antibody.



Western blot analysis of various cells using BCAS2 Polyclonal Antibody diluted at 1: 1000 cells nucleus extracted by Minute TM Cytoplasmic and Nuclear Fractionation kit (SC-003, Inventibiotech, MN, USA).

This product is suitable for in-vitro studies under the RESEARCH USE ONLY [RUO] licence. This product must not be used as for diagnostic or other medical purposes.
St John's Laboratory Ltd, Knowledge Dock Business Centre, University Way, London, E16 2RD | Tel: 0208 223 3081