

Anti-BLCAP antibody (10-90 Internal) (STJ91826)

STJ91826

GENERAL INFORMATION

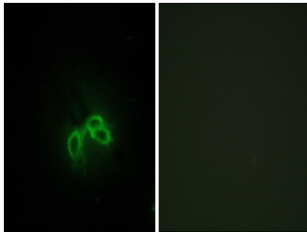
Product Type	Primary antibodies
Short Description	Rabbit polyclonal antibody anti-Bladder Cancer-Associated Protein (10-90 Internal) is suitable for use in Immunofluorescence, Immunocytochemistry and ELISA research applications.
Applications	IF, ICC, ELISA
Host/Source	Rabbit
Reactivity	Human, Mouse, Rat

PRODUCT PROPERTIES

Clonality	Polyclonal
Clone ID	
Concentration	1 mg/mL
Conjugation	Unconjugated
Purification	The antibody was affinity-purified from rabbit anti-serum by affinity-chromatography.
Dilution Range	WB 1:500-2000 IF 1:200-1:1000 ELISA 1:40000
Formulation	PBS, 50% Glycerol, 0.5% BSA and 0.02% Sodium Azide.
Isotype	IgG
Storage Instruction	Store at -20°C for up to 1 year from the date of receipt, and avoid repeat freeze-thaw cycles.

TARGET INFORMATION

Gene ID	10904
Gene Symbol	BLCAP
Uniprot ID	BLCAP_HUMAN
Immunogen	The antiserum was produced against synthesized peptide derived from human BLCAP at amino acid range 38-87
Immunogen Region	10-90 Internal
Specificity	BLCAP polyclonal antibody (Bladder Cancer-Associated Protein) binds to endogenous Bladder Cancer-Associated Protein at the amino acid region 10-90 Internal.
Immunogen Sequence	



Immunofluorescence analysis of NIH/3T3 cells, using BLCAP Antibody. The picture on the right is blocked with the synthesized peptide.