

Anti-BAX antibody (1-80 N-Term) (STJ91824)

STJ91824

GENERAL INFORMATION

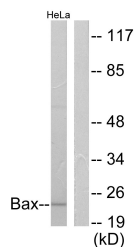
Product Type	Primary antibodies
Short Description	Rabbit polyclonal antibody anti-Apoptosis Regulator Bax (1-80 N-Term) is suitable for use in Western Blot, Immunohistochemistry, Immunofluorescence and ELISA research applications.
Applications	WB, IHC-P, IF-P, ELISA
Host/Source	Rabbit
Reactivity	Human, Mouse, Rat

PRODUCT PROPERTIES

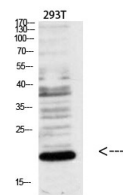
Clonality	Polyclonal
Clone ID	
Concentration	1 mg/mL
Conjugation	Unconjugated
Purification	The antibody was affinity-purified from rabbit anti-serum by affinity-chromatography.
Dilution Range	WB 1:500-1:2000 IHC 1:100-1:300 ELISA 1:10000
Formulation	PBS, 50% Glycerol, 0.5% BSA and 0.02% Sodium Azide.
Isotype	IgG
Storage Instruction	Store at -20°C for up to 1 year from the date of receipt, and avoid repeat freeze-thaw cycles.

TARGET INFORMATION

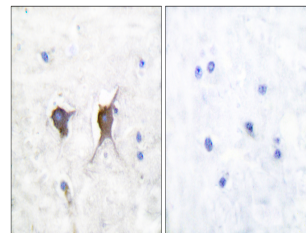
Gene ID	581
Gene Symbol	BAX
Uniprot ID	BAX_HUMAN
Immunogen	The antiserum was produced against synthesized peptide derived from human Bax at amino acid range 1-50
Immunogen Region	1-80 N-Term
Specificity	BAX polyclonal antibody (Apoptosis Regulator Bax) binds to endogenous Apoptosis Regulator Bax at the amino acid region 1-80 N-Term.
Immunogen Sequence	



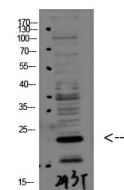
Western blot analysis of lysates from HeLa cells, using Bax Antibody. The lane on the right is blocked with the synthesized peptide.



Western blot analysis of various cell lysate, antibody was diluted at 1:1000. Secondary antibody was diluted at 1:20000



Immunohistochemistry analysis of paraffin-embedded human brain tissue, using Bax Antibody. The picture on the right is blocked with the synthesized peptide.



Western blot analysis of 293T using Bax Polyclonal Antibody diluted at 1:1000. Secondary antibody was diluted at 1:20000

This product is suitable for in-vitro studies under the RESEARCH USE ONLY [RUO] licence. This product must not be used as for diagnostic or other medical purposes.
St John's Laboratory Ltd, Knowledge Dock Business Centre, University Way, London, E16 2RD | Tel: 0208 223 3081