

Anti-DAPP1 antibody (80-160) (STJ91815)

STJ91815

GENERAL INFORMATION

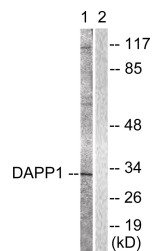
Product Type	Primary antibodies
Short Description	Rabbit polyclonal antibody anti-Dual Adapter For Phosphotyrosine And 3-Phosphotyrosine And 3-Phosphoinositide (80-160) is suitable for use in Western Blot, Immunohistochemistry, Immunofluorescence and ELISA research applications.
Applications	WB, IHC-P, IF-P, ELISA
Host/Source	Rabbit
Reactivity	Human, Mouse

PRODUCT PROPERTIES

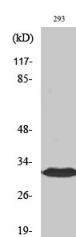
Clonality	Polyclonal
Clone ID	
Concentration	1 mg/mL
Conjugation	Unconjugated
Purification	The antibody was affinity-purified from rabbit anti-serum by affinity-chromatography.
Dilution Range	WB 1:500-1:2000 IHC 1:100-1:300 ELISA 1:10000
Formulation	PBS, 50% Glycerol, 0.5% BSA and 0.02% Sodium Azide.
Isotype	IgG
Storage Instruction	Store at -20°C for up to 1 year from the date of receipt, and avoid repeat freeze-thaw cycles.

TARGET INFORMATION

Gene ID	27071
Gene Symbol	DAPP1
Uniprot ID	DAPP1_HUMAN
Immunogen Region	The antiserum was produced against synthesized peptide derived from human DAPP1 at amino acid range 105-154 80-160
Specificity	DAPP1 polyclonal antibody (Dual Adapter For Phosphotyrosine And 3-Phosphotyrosine And 3-Phosphoinositide) binds to endogenous Dual Adapter For Phosphotyrosine And 3-Phosphotyrosine And 3-Phosphoinositide at the amino acid region 80-160.
Immunogen Sequence	



Western blot analysis of lysates from 293 cells, treated with Insulin 0.01U/ml 2', using DAPP1 Antibody. The lane on the right is blocked with the synthesized peptide.



Western blot analysis of various cells using BAM32 Polyclonal Antibody