

## Anti-ADGRB1 antibody (670-750 Internal) (STJ91810)

STJ91810

### GENERAL INFORMATION

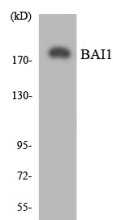
<b>Product Type</b>	Primary antibodies
<b>Short Description</b>	Rabbit polyclonal antibody anti-Adhesion G Protein-Coupled Receptor B1 (670-750 Internal) is suitable for use in Western Blot, Immunohistochemistry, Immunofluorescence, Immunocytochemistry and ELISA research applications.
<b>Applications</b>	WB, IHC-P, IF, ICC, ELISA
<b>Host/Source</b>	Rabbit
<b>Reactivity</b>	Human, Mouse

### PRODUCT PROPERTIES

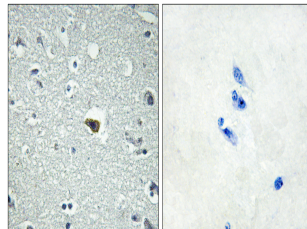
<b>Clonality</b>	Polyclonal
<b>Clone ID</b>	
<b>Concentration</b>	1 mg/mL
<b>Conjugation</b>	Unconjugated
<b>Purification</b>	The antibody was affinity-purified from rabbit anti-serum by affinity-chromatography.
<b>Dilution Range</b>	WB 1:500-1:2000 IHC 1:100-1:300 IF 1:200-1:1000 ELISA 1:10000
<b>Formulation</b>	PBS, 50% Glycerol, 0.5% BSA and 0.02% Sodium Azide.
<b>Isotype</b>	IgG
<b>Storage Instruction</b>	Store at -20°C for up to 1 year from the date of receipt, and avoid repeat freeze-thaw cycles.

### TARGET INFORMATION

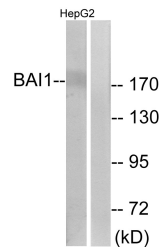
<b>Gene ID</b>	575
<b>Gene Symbol</b>	ADGRB1
<b>Uniprot ID</b>	AGR1_HUMAN
<b>Immunogen</b>	The antiserum was produced against synthesized peptide derived from human BAI1 at amino acid range 691-740
<b>Immunogen Region</b>	670-750 Internal
<b>Specificity</b>	ADGRB1 polyclonal antibody (Adhesion G Protein-Coupled Receptor B1) binds to endogenous Adhesion G Protein-Coupled Receptor B1 at the amino acid region 670-750 Internal.
<b>Immunogen Sequence</b>	



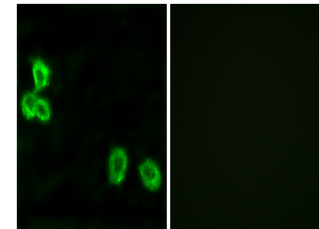
Western blot analysis of the lysates from HUVEC cells using BAI1 antibody.



Immunohistochemistry analysis of paraffin-embedded human brain tissue, using BAI1 Antibody. The picture on the right is blocked with the synthesized peptide.



Western blot analysis of lysates from HepG2 cells, using BAI1 Antibody. The lane on the right is blocked with the synthesized peptide.



Immunofluorescence analysis of MCF7 cells, using BAI1 Antibody. The picture on the right is blocked with the synthesized peptide.

This product is suitable for in-vitro studies under the RESEARCH USE ONLY [RUO] licence. This product must not be used as for diagnostic or other medical purposes.  
St John's Laboratory Ltd, Knowledge Dock Business Centre, University Way, London, E16 2RD | Tel: 0208 223 3081