

## Anti-BAGE4 antibody (1-80 N-Term) (STJ91809)

STJ91809

### GENERAL INFORMATION

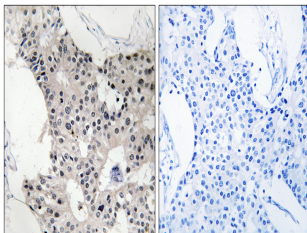
<b>Product Type</b>	Primary antibodies
<b>Short Description</b>	Rabbit polyclonal antibody anti-B Melanoma antigen 4 (1-80 N-Term) is suitable for use in Immunohistochemistry, Immunofluorescence and ELISA research applications.
<b>Applications</b>	IHC-P, IF-P, ELISA
<b>Host/Source</b>	Rabbit
<b>Reactivity</b>	Human, Rat, Mouse

### PRODUCT PROPERTIES

<b>Clonality</b>	Polyclonal
<b>Clone ID</b>	
<b>Concentration</b>	1 mg/mL
<b>Conjugation</b>	Unconjugated
<b>Purification</b>	The antibody was affinity-purified from rabbit anti-serum by affinity-chromatography.
<b>Dilution Range</b>	IHC 1:100-1:300 ELISA 1:10000
<b>Formulation</b>	PBS, 50% Glycerol, 0.5% BSA and 0.02% Sodium Azide.
<b>Isotype</b>	IgG
<b>Storage Instruction</b>	Store at -20°C for up to 1 year from the date of receipt, and avoid repeat freeze-thaw cycles.

### TARGET INFORMATION

<b>Gene ID</b>	<a href="#">85317</a>
<b>Gene Symbol</b>	<a href="#">BAGE4</a>
<b>Uniprot ID</b>	<a href="#">BAGE4_HUMAN</a>
<b>Immunogen</b>	The antiserum was produced against synthesized peptide derived from human BAGE4 at amino acid range 9-58
<b>Immunogen Region</b>	1-80 N-Term
<b>Specificity</b>	BAGE4 polyclonal antibody (B Melanoma Antigen 4) binds to endogenous B Melanoma Antigen 4 at the amino acid region 1-80 N-Term.
<b>Immunogen Sequence</b>	



Immunohistochemistry analysis of paraffin-embedded human breast carcinoma, using BAGE4 Antibody. The picture on the right is blocked with the synthesized peptide.